

# Anti-GRK2 Antibody

12/19

CATALOG NO.: A1993-100 (100 µl)

**BACKGROUND DESCRIPTION:** This gene encodes a member of the G protein-coupled receptor kinase family of proteins. The encoded protein phosphorylates the beta-adrenergic receptor as well as a wide range of other substrates including non-GPCR cell surface receptors, and cytoskeletal, mitochondrial, and transcription factor proteins. Data from rodent models supports a role for this gene in embryonic development, heart function and metabolism. Elevated expression of this gene has been observed in human patients with heart failure and Alzheimer's disease.

**ALTERNATE NAMES:** BARK; BARK1; GRK2; Beta-adrenergic receptor kinase 1; Beta-ARK-1; G-protein coupled receptor kinase 2

**ANTIBODY TYPE:** Polyclonal

**HOST/ISOTYPE:** Rabbit / IgG

**IMMUNOGEN:** KLH-conjugated synthetic peptide targeting a sequence within the N-term region of human GRK2

**MOLECULAR WEIGHT:** 80 kDa

**PURIFICATION:** Affinity purified

**FORM:** Liquid

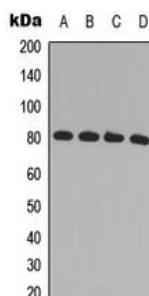
**FORMULATION:** In 0.42% Potassium phosphate; 0.87% NaCl; pH 7.3; 30% glycerol; and 0.01% sodium azide

**SPECIES REACTIVITY:** Human, Mouse, Rat, Bovine

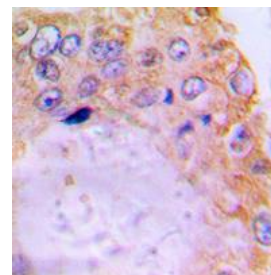
**STORAGE CONDITIONS:** Store at -20°C. Avoid freeze / thaw cycles

**APPLICATIONS AND USAGE:** WB 1:500 - 1:1000, IHC 1:100 - 1:200

**Note:** This information is only intended as a guide. The optimal dilutions must be determined by the user



Western blot analysis of GRK2 expression in Jurkat (A); Raji (B); mouse kidney (C); rat kidney (D) whole cell lysates.



Immunohistochemical analysis of GRK2 staining in human prostate cancer formalin fixed paraffin embedded tissue section. The section was pre-treated using heat mediated antigen retrieval with sodium citrate buffer (pH 6.0), then incubated with the antibody at RT and detected using an HRP conjugated compact polymer system. DAB was used as the chromogen. The section was then counterstained with hematoxylin and mounted with DPX.

## RELATED PRODUCTS:

Phospho GRK2 (Ser29) Antibody (A1964)  
 AKT1 (T450) Antibody (CT) (6743)  
 GSK-3b Antibody (3494)  
 HDAC6 Antibody (3606)