

# Anti-PD-1 Biotinylated Antibody

**CATALOG NO.:** A1996-30T (30 µg Trial size)  
A1996-100 (100 µg)

**BACKGROUND DESCRIPTION:** Programmed death protein 1 (PD-1) is also known as CD279 and PDCD1, is a type I membrane protein and is a member of the extended CD28/CTLA-4 family of T cell regulators. PD-1 is expressed on the surface of activated T cells, B cells, macrophages, myeloid cells and a subset of thymocytes. PD-1 has two ligands, PD-L1 and PD-L2, which are members of the B7 family. PD-L1 is expressed on almost all murine tumor cell lines, including PA1 myeloma, P815 mastocytoma, and B16 melanoma upon treatment with IFN-γ. PD-L2 expression is more restricted and is expressed mainly by dendritic cells. Elevated levels of PD-1 inhibit the T-cell proliferation and production of related cytokines including IL-1, IL-4, IL-10 and IFN-γ by suppressing the activation and transduction of PI3K/AKT pathway. In addition, co-ligation of PD-1 inhibits BCR-mediated signal by de-phosphorylating key signal transducer. In vitro, treatment of anti-CD3 stimulated T cells with PD-L1 ligand results in reduced T cell proliferation and IFN-γ secretion.

**ALTERNATE NAMES:** CD279, PDCD1, PD1, hPD-1, hPD-I, SLEB2

**ANTIBODY TYPE:** Polyclonal

**HOST/ISOTYPE:** Rabbit / IgG

**IMMUNOGEN:** Human PD-1 recombinant protein

**ANTIGEN MW:** 19.1 kDa

**PURIFICATION:** Affinity purified

**FORM:** Liquid

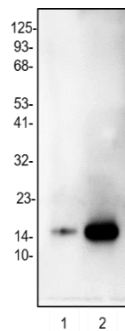
**FORMULATION:** In PBS with 30% glycerol, 0.5% BSA, 0.5 mM EDTA, 0.03% Proclin, pH 7.2

**SPECIES REACTIVITY:** Human, Mouse, Rat

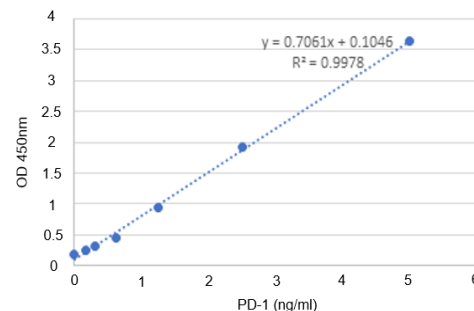
**STORAGE CONDITIONS:** Store at -20°C. Avoid freeze / thaw cycles

**APPLICATIONS AND USAGE:** WB 1:50-200, ELISA 1:500

**Note:** This information is only intended as a guide. The optimal dilutions must be determined by the user



Western blot analysis of recombinant human PD-1 10ng (1) and 50 ng (2) by Anti-PD-1 Biotinylated antibody.



Direct ELISA shows that Anti-PD-1 Biotinylated antibody can bind to immobilized recombinant human PD-1 with a linear range of 0-5 ng/ml.

## RELATED PRODUCTS:

Anti-PD-1 (CD279), Rabbit Monoclonal Antibody (A1825)  
 Anti-PD-L1 Monoclonal Antibody (Clone: ABM5F25) (A1537)  
 Anti-PD-L1 (Atezolizumab), Humanized Antibody (A1305)  
 Anti-PD-1 Antibody (A1384)  
 Anti-PD-1 (Nivolumab). Humanized Antibody (A1307)