

Anti-NF-kB p65 Antibody (Clone#AMC0222)

12/19

CATALOG NO.: A2000-100 (100 µl)

BACKGROUND DESCRIPTION: NF-kB is a ubiquitous transcription factor involved in several biological processes. It is held in the cytoplasm in an inactive state by specific inhibitors. Upon degradation of the inhibitor, NF-kB moves to the nucleus and activates transcription of specific genes. NF-kB is composed of NFKB1 or NFKB2 bound to either REL, RELA, or RELB. The most abundant form of NF-kB is NFKB1 complexed with the product of this gene, RELA. Four transcript variants encoding different isoforms have been found for this gene.

ALTERNATE NAMES: NFKB3; p65; NF-kB p65; RELA; CMCU

ANTIBODY TYPE: Monoclonal

CLONE: AMC0222

HOST/ISOTYPE: Mouse / IgG

IMMUNOGEN: Recombinant protein of human RELA

MOLECULAR WEIGHT: 60 kDa

PURIFICATION: Affinity purified

FORM: Liquid

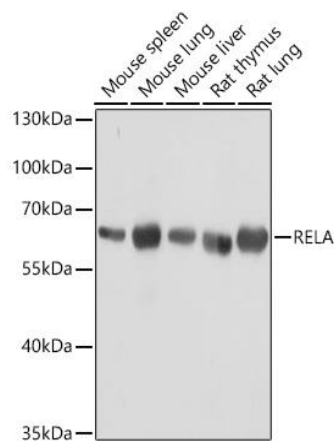
FORMULATION: In PBS with 0.02% sodium azide, 50% glycerol, pH7.3

SPECIES REACTIVITY: Human, Mouse, Rat

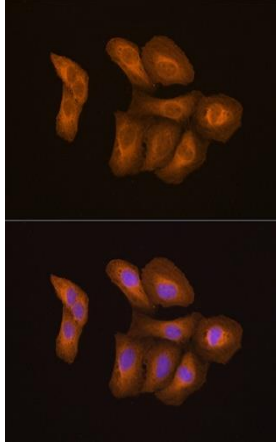
STORAGE CONDITIONS: Store at -20°C. Avoid freeze / thaw cycles

APPLICATIONS AND USAGE: WB 1:500 - 1:2000, IF 1:50 - 1:200

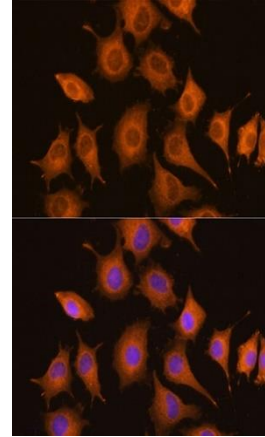
Note: This information is only intended as a guide. The optimal dilutions must be determined by the user



Western blot analysis of extracts of various cell lines, using NF-kB p65 antibody at 1:1000 dilution. Secondary antibody: HRP Goat Anti-Mouse IgG (H+L) at 1:10000 dilution. Lysates/proteins: 25 µg per lane. Blocking buffer: 3% nonfat dry milk in TBST. Detection: ECL Basic Kit. Exposure time: 1s.



Immunofluorescence analysis of U2OS cells using NF-kB p65 antibody at dilution of 1:100. Blue: DAPI for nuclear staining.



Immunofluorescence analysis of L929 cells using NF-kB p65 antibody at dilution of 1:100. Blue: DAPI for nuclear staining.

RELATED PRODUCTS:

NFkB p65 Antibody (3038)
Phospho NF-kB p105 (Ser907) Antibody (A1954)
NFkB p50 Antibody (3354R)
Phospho NF-kB p65 (Ser276) Antibody (A1953)

FOR RESEARCH USE ONLY! Not to be used on humans.