

# Anti-Desmin Antibody

**CATALOG NO.:** A2001-100 (100 µl)

**BACKGROUND DESCRIPTION:** This gene encodes a muscle-specific class III intermediate filament. Homo-polymers of this protein form a stable intra-cytoplasmic filamentous network connecting myofibrils to each other and to the plasma membrane. Mutations in this gene are associated with desmin-related myopathy, a familial cardiac and skeletal myopathy (CSM), and with distal myopathies.

**ALTERNATE NAMES:** CSM1; CSM2; CDCD3; CMD1F; LGMD1D; LGMD1E; LGMD2R, Desmin

**ANTIBODY TYPE:** Polyclonal

**HOST/ISOTYPE:** Rabbit / IgG

**IMMUNOGEN:** KLH-conjugated synthetic peptide targeting a sequence within the C-term region of human Desmin.

**MOLECULAR WEIGHT:** 52 kDa

**PURIFICATION:** Affinity purified

**FORM:** Liquid

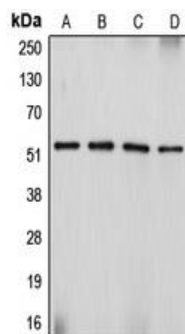
**FORMULATION:** In 0.42% Potassium phosphate; 0.87% NaCl; pH 7.3; 30% glycerol; and 0.01% sodium azide

**SPECIES REACTIVITY:** Human, Chicken, Rat, Dog, Porcine, Bovine

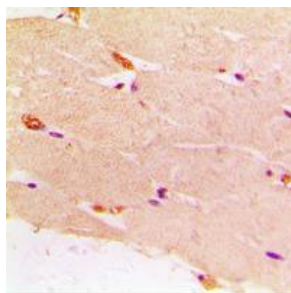
**STORAGE CONDITIONS:** Store at -20°C. Avoid freeze / thaw cycles

**APPLICATIONS AND USAGE:** WB 1:500 - 1:1000, IHC 1:100 - 1:200, IF 1:100 - 1:500

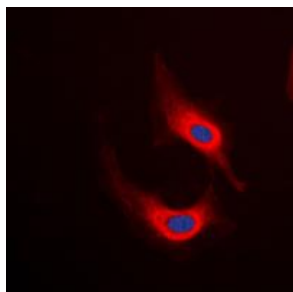
**Note:** This information is only intended as a guide. The optimal dilutions must be determined by the user



Western blot analysis of Desmin expression in Sol8 (A); HeLa (B); SJRH30 (C); PC12 (D) whole cell lysates.



Immunohistochemical analysis of Desmin staining in human muscle formalin fixed paraffin embedded tissue section. The section was pre-treated using heat mediated antigen retrieval with sodium citrate buffer (pH 6.0), then incubated with the antibody at RT and detected using an HRP conjugated compact polymer system. DAB was used as the chromogen. The section was then counterstained with hematoxylin and mounted with DPX.



Immunofluorescent analysis of Desmin staining in HeLa cells. Formalin-fixed cells were permeabilized with 0.1% Triton X-100 in TBS for 5-10 minutes and blocked with 3% BSA-PBS for 30 minutes at RT. Cells were probed with the primary antibody in 3% BSA-PBS and incubated overnight at 4 C in a humidified chamber. Cells were washed with PBST and incubated with a DyLight 594-conjugated secondary antibody (red) in PBS at RT in the dark. DAPI was used to stain the cell nuclei (blue).

**RELATED PRODUCTS:**

Anti-Desmin Rabbit Monoclonal Antibody (A1131)

Anti-BMP-2 Antibody (A1621)

Anti-SMAD2/3 Antibody (A1214)

Anti-Vimentin Rabbit Monoclonal Antibody (A1600)

***FOR RESEARCH USE ONLY! Not to be used on humans.***