

Anti-Dopamine beta-Hydroxylase Antibody

CATALOG NO.: A2002-100 (100 µl)

BACKGROUND DESCRIPTION: The protein encoded by this gene is an oxidoreductase belonging to the copper type II, ascorbate-dependent monooxygenase family. The encoded protein, expressed in neurosecretory vesicles and chromaffin granules of the adrenal medulla, catalyzes the conversion of dopamine to norepinephrine, which functions as both a hormone and as the main neurotransmitter of the sympathetic nervous system. The enzyme encoded by this gene exists in both soluble and membrane-bound forms, depending on the absence or presence, respectively, of a signal peptide. Mutations in this gene cause dopamine beta-hydroxylase deficiency in human patients, characterized by deficits in autonomic and cardiovascular function, including hypotension and ptosis. Polymorphisms in this gene may play a role in a variety of psychiatric disorders.

ALTERNATE NAMES: Dopamine beta-hydroxylase; Dopamine beta-monoxygenase.

ANTIBODY TYPE: Polyclonal

HOST/ISOTYPE: Rabbit / IgG

IMMUNOGEN: KLH-conjugated synthetic peptide targeting a sequence within the center region of human Dopamine beta-Hydroxylase

MOLECULAR WEIGHT: 75 kDa

PURIFICATION: Affinity purified

FORM: Liquid

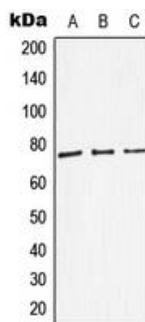
FORMULATION: In 0.42% Potassium phosphate; 0.87% NaCl; pH 7.3; 30% glycerol; and 0.01% sodium azide

SPECIES REACTIVITY: Human, Mouse

STORAGE CONDITIONS: Store at -20°C. Avoid freeze / thaw cycles

APPLICATIONS AND USAGE: WB 1:500 - 1:1000

Note: This information is only intended as a guide. The optimal dilutions must be determined by the user



Western blot analysis of Dopamine beta-Hydroxylase expression in HEK293T (A); SP2/0 (B); NIH3T3 (C) whole cell lysates.

RELATED PRODUCTS:

Synapsin Antibody (6008)
 Tyrosine Hydroxylase Antibody (3615)
 Anti-GOT1 Antibody (A1272)
 Synaptotagmin Antibody (3177)

FOR RESEARCH USE ONLY! Not to be used on humans.