

Anti-ARF6 Antibody

CATALOG NO.: A2009-100 (100 µl)

BACKGROUND DESCRIPTION: This gene encodes a member of the human ARF gene family, which is part of the RAS superfamily. The ARF genes encode small guanine nucleotide-binding proteins that stimulate the ADP-ribosyltransferase activity of cholera toxin and play a role in vesicular trafficking and as activators of phospholipase D. The product of this gene is localized to the plasma membrane, and regulates vesicular trafficking, re-modelling of membrane lipids, and signaling pathways that lead to actin remodeling. A pseudogene of this gene is located on chromosome 7.

ALTERNATE NAMES: ADP-ribosylation factor 6

ANTIBODY TYPE: Polyclonal

HOST/ISOTYPE: Rabbit / IgG

IMMUNOGEN: KLH-conjugated synthetic peptide targeting a sequence within the center region of human ARF6

MOLECULAR WEIGHT: 26 kDa

PURIFICATION: Affinity purified

FORM: Liquid

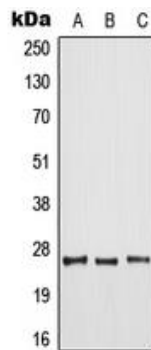
FORMULATION: In 0.42% Potassium phosphate; 0.87% NaCl; pH 7.3; 30% glycerol; and 0.01% sodium azide

SPECIES REACTIVITY: Human, Mouse, Zebrafish, Chicken, Rat, Porcine

STORAGE CONDITIONS: Store at -20°C. Avoid freeze / thaw cycles

APPLICATIONS AND USAGE: WB 1:500 - 1:1000

Note: This information is only intended as a guide. The optimal dilutions must be determined by the user



Western blot analysis of ARF6 expression in HeLa (A); mouse liver (B); rat spleen (C) whole cell lysates.

RELATED PRODUCTS:

AKT1 (T450) Antibody (CT) (6743)
 Anti-p38 MAPK Rabbit Monoclonal Antibody (A1125)
 cdc42/Rac Antibody (3080)
 GSK-3b Antibody (3494)

FOR RESEARCH USE ONLY! Not to be used on humans.