

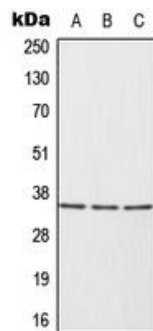
Anti-HUR Antibody

CATALOG NO.: A2010-100 (100 µl)

BACKGROUND DESCRIPTION: The protein encoded by this gene is a member of the ELAVL family of RNA-binding proteins that contain several RNA recognition motifs, and selectively bind AU-rich elements (AREs) found in the 3' untranslated regions of mRNAs. AREs signal degradation of mRNAs as a means to regulate gene expression, thus by binding AREs, the ELAVL family of proteins play a role in stabilizing ARE-containing mRNAs. This gene has been implicated in a variety of biological processes and has been linked to a number of diseases, including cancer. It is highly expressed in many cancers, and could be potentially useful in cancer diagnosis, prognosis, and therapy.

ALTERNATE NAMES:	HUR; ELAV-like protein 1; Hu-antigen R; HuR.
ANTIBODY TYPE:	Polyclonal
HOST/ISOTYPE:	Rabbit / IgG
IMMUNOGEN:	KLH-conjugated synthetic peptide targeting a sequence within the center region of human HUR
MOLECULAR WEIGHT:	36 kDa
PURIFICATION:	Affinity purified
FORM:	Liquid
FORMULATION:	In 0.42% Potassium phosphate; 0.87% NaCl; pH 7.3; 30% glycerol; and 0.01% sodium azide
SPECIES REACTIVITY:	Human, Porcine, Sheep, Bovine
STORAGE CONDITIONS:	Store at -20°C. Avoid freeze / thaw cycles
APPLICATIONS AND USAGE:	WB 1:500 - 1:1000

Note: This information is only intended as a guide. The optimal dilutions must be determined by the user



Western blot analysis of HUR expression in HeLa (A); Ramos (B); Jurkat (C) whole cell lysates.

RELATED PRODUCTS:

Anti-COX-2 Rabbit Monoclonal Antibody (RM348) (A1853)
 Anti-HuD Antibody (A1639)
 C-Myc Antibody (6767)
 Chk2 Antibody (3305)

FOR RESEARCH USE ONLY! Not to be used on humans.