

Anti-H4R3me1 Antibody

CATALOG NO.: A2021-100 (100 µl)

BACKGROUND DESCRIPTION: Histones are basic nuclear proteins that are responsible for the nucleosome structure of the chromosomal fiber in eukaryotes. Two molecules of each of the four core histones (H2A, H2B, H3, and H4) form an octamer, around which approximately 146 bp of DNA is wrapped in repeating units, called nucleosomes. The linker histone, H1, interacts with linker DNA between nucleosomes and functions in the compaction of chromatin into higher order structures. This gene is intronless and encodes a replication-dependent histone that is a member of the histone H4 family. Transcripts from this gene lack poly A tails but instead contain a palindromic termination element. This gene is found in the large histone gene cluster on chromosome 6.

ALTERNATE NAMES: HIST1H4B; H4/I; H4FI; histone H4; Histone H4; HIST1H4A; HIST2H4A; FO108; H4; H4/n; H4F2; H4FN; HIST2H4

ANTIBODY TYPE: Polyclonal

HOST/ISOTYPE: Rabbit / IgG

IMMUNOGEN: A synthetic methylation peptide targeting residues around Arginine 3 of human Histone H4

MOLECULAR WEIGHT: 13 kDa

PURIFICATION: Affinity purified

FORM: Liquid

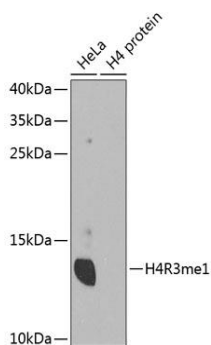
FORMULATION: In PBS with 0.02% sodium azide, 50% glycerol, pH 7.3

SPECIES REACTIVITY: Human, Mouse, Rat

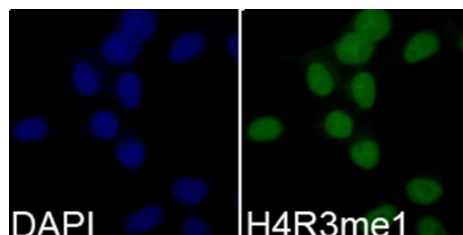
STORAGE CONDITIONS: Store at -20°C. Avoid freeze / thaw cycles

APPLICATIONS AND USAGE: WB 1:500 - 1:2000, IHC 1:50 - 1:200, IF 1:50 - 1:200

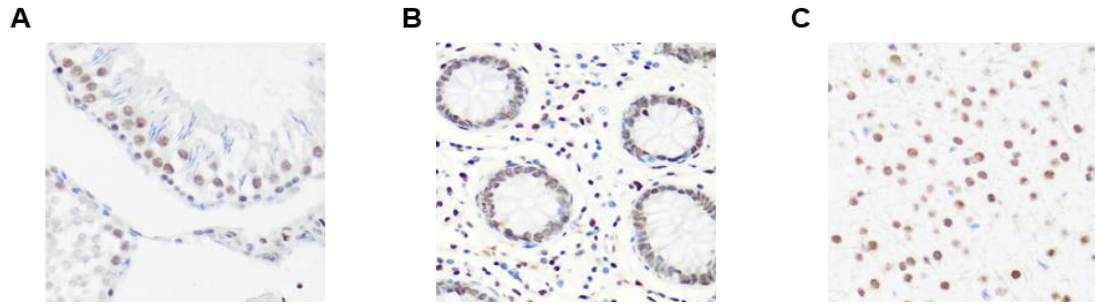
Note: This information is only intended as a guide. The optimal dilutions must be determined by the user



Western blot analysis of H4R3me1 expression in HeLa cells and H4 protein. HRP-conjugated goat anti-rabbit IgG (H+L) was used as secondary antibody at 1:10000 dilution. 25 µg of lysates/proteins were loaded per lane. 3% nonfat dry milk in TBST was used as blocking buffer.



Immunofluorescence analysis of 293T cells using Anti-H4R3me1 Antibody. Blue: DAPI for nuclear staining.



Immunohistochemistry of paraffin-embedded rat testis (A), human colon (B), and mouse brain (C) using Anti-H4R3me1 Antibody at dilution of 1:100 (40x lens).

RELATED PRODUCTS:

- H4K5,8,12,16ac polyclonal antibody (6822)
- H4K20me1 monoclonal antibody (6819)
- Anti- Histone H4 Rabbit Monoclonal Antibody (A1139)
- H4K20me3 polyclonal antibody (6877)

FOR RESEARCH USE ONLY! Not to be used on humans.