

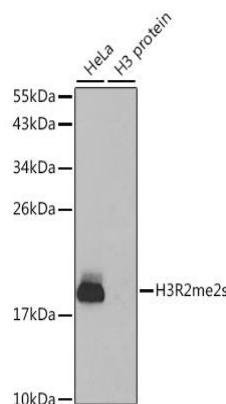
Anti-H3R2me2(sym) Antibody

CATALOG NO.: A2022-100 (100 µl)

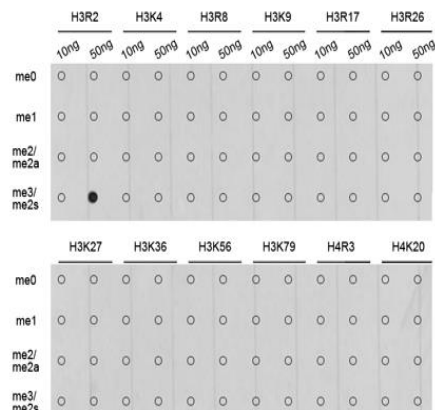
BACKGROUND DESCRIPTION: Histones are basic nuclear proteins that are responsible for the nucleosome structure of the chromosomal fiber in eukaryotes. Nucleosomes consist of approximately 146 bp of DNA wrapped around a histone octamer composed of pairs of each of the four core histones (H2A, H2B, H3, and H4). The chromatin fiber is further compacted through the interaction of a linker histone, H1, with the DNA between the nucleosomes to form higher order chromatin structures. This gene is intronless and encodes a replication-dependent histone that is a member of the histone H3 family. Transcripts from this gene lack poly A tails; instead, they contain a palindromic termination element. This gene is located separately from the other H3 genes that are in the histone gene cluster on chromosome 6p22-p21.3.

ALTERNATE NAMES:	H3.4; H3/g; H3FT; H3t; HIST3H3; Histone H3; HIST1H3A
ANTIBODY TYPE:	Polyclonal
HOST/ISOTYPE:	Rabbit / IgG
IMMUNOGEN:	A synthetic methylated peptide to residues around Arginine 2 of human histone H3
MOLECULAR WEIGHT:	18 kDa
PURIFICATION:	Affinity purified
FORM:	Liquid
FORMULATION:	In PBS with 0.02% sodium azide, 50% glycerol, pH 7.3
SPECIES REACTIVITY:	Human, Mouse, Rat
STORAGE CONDITIONS:	Store at -20°C. Avoid freeze / thaw cycles
APPLICATIONS AND USAGE:	WB 1:500 - 1:2000, IHC 1:50 - 1:200, IF 1:50 - 1:200

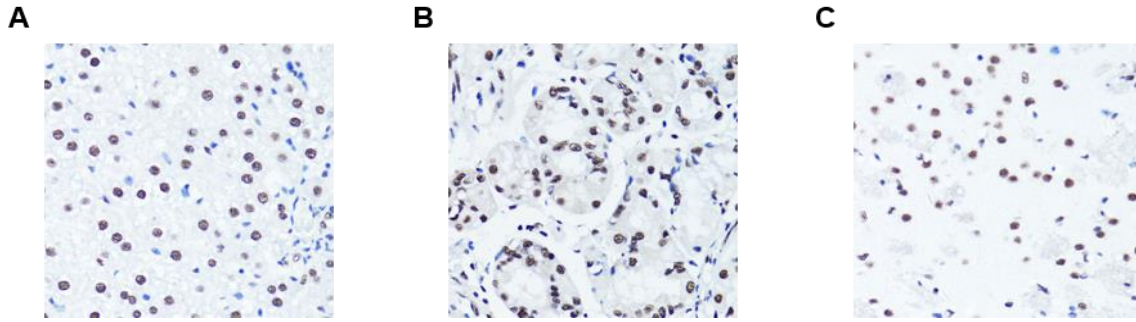
Note: This information is only intended as a guide. The optimal dilutions must be determined by the user



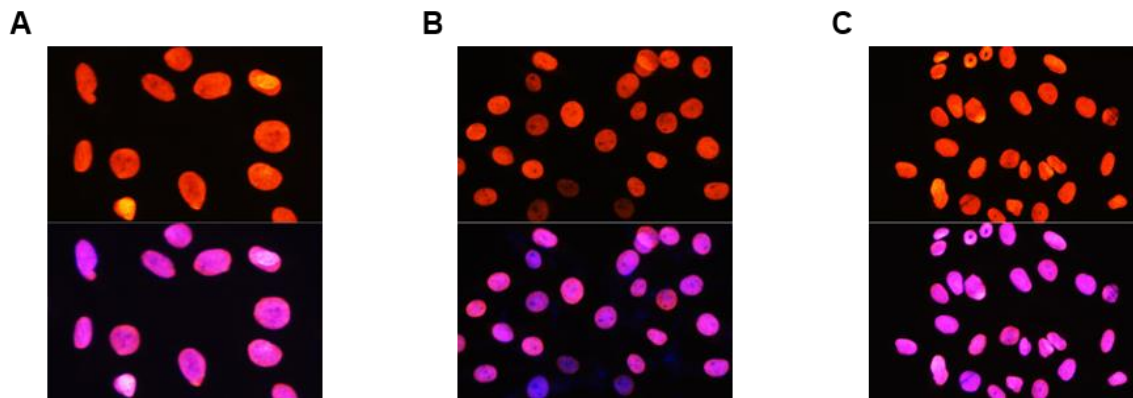
Western blot analysis of H3R2me2(sym) expression in HeLa cells and H3 protein. HRP-conjugated goat anti-rabbit IgG (H+L) was used as secondary antibody at 1:10000 dilution. 25 µg of lysates/proteins were loaded per lane. 3% nonfat dry milk in TBST was used as blocking buffer.



Dot-blot analysis of methylation peptides using Anti-H3R2me2(sym) Antibody.



Immunohistochemistry of paraffin-embedded rat liver (A), human stomach (B), and mouse brain (C) using Anti-H3R2me2(sym) Antibody at dilution of 1:100 (40x lens).



Immunofluorescence analysis of C6 cells (A), NIH3T3 cells (B), and U2-OS cells (C) using Anti-H3R2me2(sym) Antibody at dilution of 1:100 (40x lens). Blue: DAPI for nuclear staining.

RELATED PRODUCTS:

H3R17me2(asym)K18ac polyclonal antibody (6875)
 Phospho Histone H3 (Ser10) Antibody (A1943)
 H3R17me2 polyclonal antibody (6874)
 Histone H3 Antibody (3623)

FOR RESEARCH USE ONLY! Not to be used on humans.