

Anti-H3R2me2(asym) Antibody

CATALOG NO.: A2025-100 (100 µl)

BACKGROUND DESCRIPTION: Histones are basic nuclear proteins that are responsible for the nucleosome structure of the chromosomal fiber in eukaryotes. Nucleosomes consist of approximately 146 bp of DNA wrapped around a histone octamer composed of pairs of each of the four core histones (H2A, H2B, H3, and H4). The chromatin fiber is further compacted through the interaction of a linker histone, H1, with the DNA between the nucleosomes to form higher order chromatin structures. This gene is intronless and encodes a replication-dependent histone that is a member of the histone H3 family. Transcripts from this gene lack poly A tails; instead, they contain a palindromic termination element. This gene is located separately from the other H3 genes that are in the histone gene cluster on chromosome 6p22-p21.3.

ALTERNATE NAMES: H3.4; H3/g; H3FT; H3t; HIST3H3; Histone H3; HIST1H3A

ANTIBODY TYPE: Polyclonal

HOST/ISOTYPE: Rabbit / IgG

IMMUNOGEN: A synthetic methylated peptide targeting residues around Arginine 2 of human Histone H3

MOLECULAR WEIGHT: 17 kDa

PURIFICATION: Affinity purified

FORM: Liquid

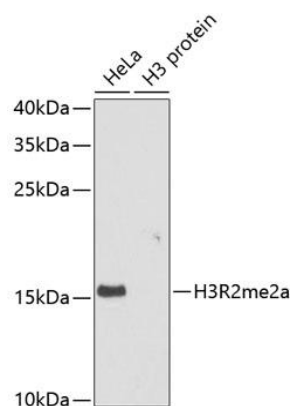
FORMULATION: In PBS with 0.02% sodium azide, 50% glycerol, pH 7.3

SPECIES REACTIVITY: Human, Mouse, Rat

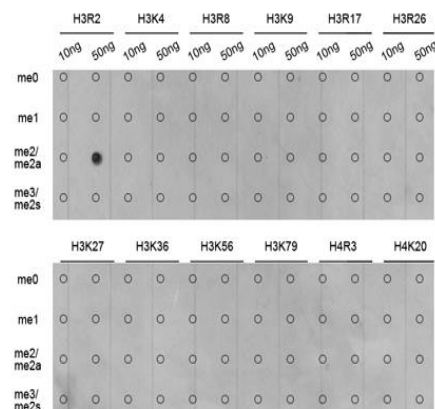
STORAGE CONDITIONS: Store at -20°C. Avoid freeze / thaw cycles

APPLICATIONS AND USAGE: WB 1:500 - 1:2000, IHC 1:50 - 1:200, IF 1:50 - 1:200

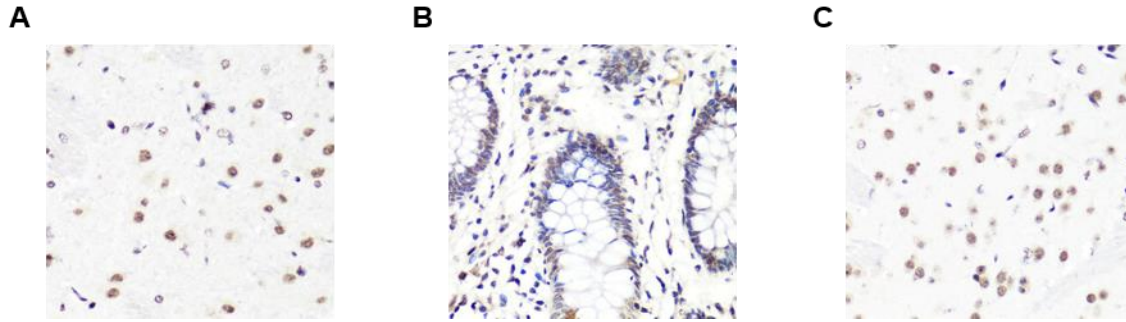
Note: This information is only intended as a guide. The optimal dilutions must be determined by the user



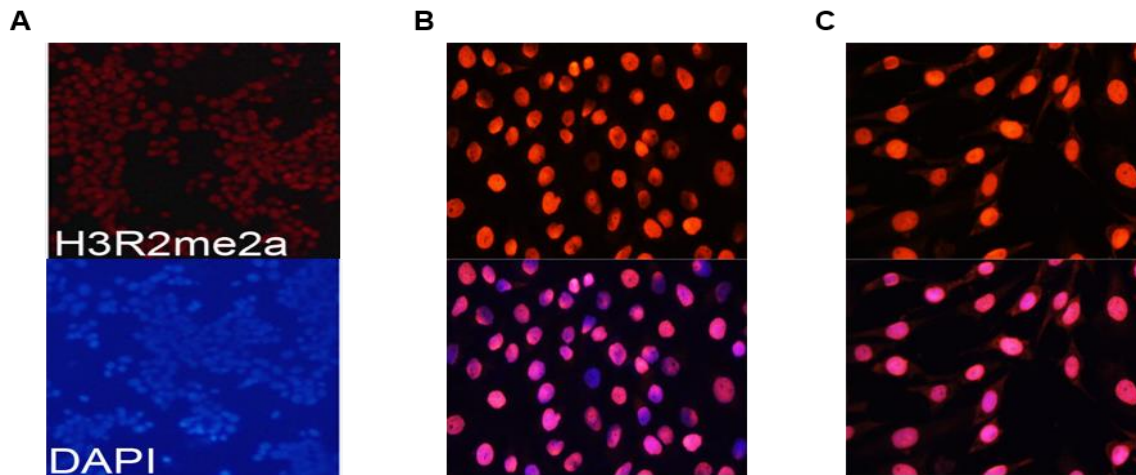
Western blot analysis of H3R2me2(asym) expression in HeLa cells and H3 protein. HRP-conjugated goat anti-rabbit IgG (H+L) was used as secondary antibody at 1:10000 dilution. 25 µg of lysates/proteins were loaded per lane. 3% nonfat dry milk in TBST was used as blocking buffer.



Dot-blot analysis of methylation peptides using Anti-H3R2me2(asym) antibody.



Immunohistochemistry of paraffin-embedded rat brain (A), human colon (B), and mouse brain (C) using Anti-H3R2me2(asym) antibody at dilution of 1:100 (40x lens).



Immunofluorescence analysis of 293T (A), HeLa (B), and NIH3T3 (C) cells using Anti-H3R2me2(asym) antibody at dilution of 1:100. Blue: DAPI for nuclear staining.

RELATED PRODUCTS:

Phospho Histone H3 (Ser10) Antibody (A1943)
 Histone H3 Antibody (3623)
 H3R17me2 Antibody (6803)
 H3R17me2(asym)K18ac polyclonal antibody (6875)

FOR RESEARCH USE ONLY! Not to be used on humans.