

# Anti-CD31 Antibody

01/20

---

**CATALOG NO.:** A2027-100 (100 µl)
 

---

**BACKGROUND DESCRIPTION:** The protein encoded by this gene is found on the surface of platelets, monocytes, neutrophils, and some types of T-cells, and makes up a large portion of endothelial cell intercellular junctions. The encoded protein is a member of the immunoglobulin super family and is likely involved in leukocyte migration, angiogenesis, and integrin activation.

**ALTERNATE NAMES:** Platelet endothelial cell adhesion molecule; PECAM-1; EndoCAM; GPIIA'; PECA1; CD31

**ANTIBODY TYPE:** Polyclonal

**HOST/ISOTYPE:** Rabbit / IgG

**IMMUNOGEN:** KLH-conjugated synthetic peptide targeting a sequence within the center region of human CD31

**MOLECULAR WEIGHT:** 130 kDa

**PURIFICATION:** Affinity purified

**FORM:** Liquid

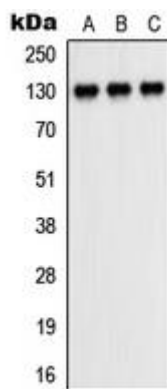
**FORMULATION:** In 0.42% Potassium phosphate; 0.87% NaCl; pH 7.3; 30% glycerol; and 0.01% sodium azide

**SPECIES REACTIVITY:** Human, Mouse, Rat

**STORAGE CONDITIONS:** Store at -20°C. Avoid freeze / thaw cycles

**APPLICATIONS AND USAGE:** WB 1:500 - 1:1000

**Note:** This information is only intended as a guide. The optimal dilutions must be determined by the user



Western blot analysis of CD31 expression in Jurkat (A); RAW264.7 (B); PC12 (C) whole cell lysates.

**RELATED PRODUCTS:**

ICAM-1 Antibody (3422R)  
 CXCR4 Antibody (5541)  
 Anti-STAT3 Antibody (A1670)  
 GSK-3b Antibody (3494)

**FOR RESEARCH USE ONLY! Not to be used on humans.**