

Anti-TAZ Antibody

CATALOG NO.: A2028-100 (100 µl)

BACKGROUND DESCRIPTION: This gene encodes a protein that is expressed at high levels in cardiac and skeletal muscle. Mutations in this gene have been associated with a number of clinical disorders including Barth syndrome, dilated cardiomyopathy (DCM), hypertrophic DCM, endocardial fibroelastosis, and left ventricular noncompaction (LVNC). Multiple transcript variants encoding different isoforms have been described. A long form and a short form of each of these isoforms is produced; the short form lacks a hydrophobic leader sequence and may exist as a cytoplasmic protein rather than being membrane-bound. Other alternatively spliced transcripts have been described but the full-length nature of all these transcripts is not known.

ALTERNATE NAMES: EFE2; G4.5; Tafazzin; Protein G4.5

ANTIBODY TYPE: Polyclonal

HOST/ISOTYPE: Rabbit / IgG

IMMUNOGEN: KLH-conjugated synthetic peptide targeting a sequence within the center region of human TAZ

MOLECULAR WEIGHT: 44 kDa

PURIFICATION: Affinity purified

FORM: Liquid

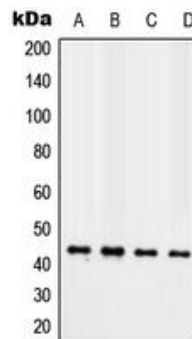
FORMULATION: In 0.42% Potassium phosphate; 0.87% NaCl; pH 7.3; 30% glycerol; and 0.01% sodium azide

SPECIES REACTIVITY: Human, Mouse, Rat

STORAGE CONDITIONS: Store at -20°C. Avoid freeze / thaw cycles

APPLICATIONS AND USAGE: WB 1:500 - 1:1000

Note: This information is only intended as a guide. The optimal dilutions must be determined by the user



Western blot analysis of TAZ expression in MCF7 (A); NIH3T3 (B); H9C2 (C); human heart (D) whole cell lysates.

RELATED PRODUCTS:

BMP-7 Antibody (5677R)
 CTGF Antibody (5553R)
 Bcl-2 Antibody (3033)
 Cyr61 Antibody (3648)

FOR RESEARCH USE ONLY! Not to be used on humans.