

# Anti-TIMP3 Antibody

CATALOG NO.: A2029-100 (100 µl)

**BACKGROUND DESCRIPTION:** This gene belongs to the TIMP gene family. The proteins encoded by this gene family are inhibitors of the matrix metalloproteinases, a group of peptidases involved in degradation of the extracellular matrix (ECM). Expression of this gene is induced in response to mitogenic stimulation and this netrin domain-containing protein is localized to the ECM. Mutations in this gene have been associated with the autosomal dominant disorder Sorsby's fundus dystrophy. This gene is expressed in many tissues, with highest expression in the placenta

**ALTERNATE NAMES:** Metalloproteinase inhibitor 3; Protein MIG-5; Tissue inhibitor of metalloproteinases 3; TIMP-3

**ANTIBODY TYPE:** Polyclonal

**HOST/ISOTYPE:** Rabbit / IgG

**IMMUNOGEN:** KLH-conjugated synthetic peptide targeting a sequence within the center region of human TIMP3

**MOLECULAR WEIGHT:** 30 kDa

**PURIFICATION:** Affinity purified

**FORM:** Liquid

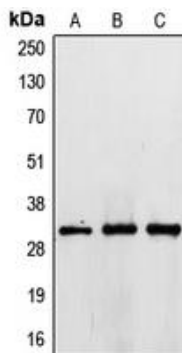
**FORMULATION:** In 0.42% Potassium phosphate; 0.87% NaCl; pH 7.3; 30% glycerol; and 0.01% sodium azide

**SPECIES REACTIVITY:** Human, Mouse, Rat, Rabbit, Bovine, Dog, Porcine

**STORAGE CONDITIONS:** Store at -20°C. Avoid freeze / thaw cycles

**APPLICATIONS AND USAGE:** WB 1:500 - 1:1000

**Note:** This information is only intended as a guide. The optimal dilutions must be determined by the user



Western blot analysis of TIMP3 expression in HepG2 (A); HeLa (B); NIH3T3 (C) whole cell lysates.

## RELATED PRODUCTS:

TACE Antibody (3222)  
 VEGF-C Antibody (5633R)  
 IGF-BP1 Antibody (5717)  
 Anti-Smad4 Rabbit Monoclonal Antibody (A1605)  
 ADAM10 Antibody (3201)

**FOR RESEARCH USE ONLY! Not to be used on humans.**