

Anti-H3K36me3 Antibody

CATALOG NO.: A2031-100 (100 µl)

BACKGROUND DESCRIPTION: Histones are basic nuclear proteins that are responsible for the nucleosome structure of the chromosomal fiber in eukaryotes. Nucleosomes consist of approximately 146 bp of DNA wrapped around a histone octamer composed of pairs of each of the four core histones (H2A, H2B, H3, and H4). The chromatin fiber is further compacted through the interaction of a linker histone, H1, with the DNA between the nucleosomes to form higher order chromatin structures. This gene is intronless and encodes a replication-dependent histone that is a member of the histone H3 family. Transcripts from this gene lack poly A tails; instead, they contain a palindromic termination element. This gene is located separately from the other H3 genes that are in the histone gene cluster on chromosome 6p22-p21.3.

ALTERNATE NAMES: H3.4; H3/g; H3FT; H3t; HIST3H3; Histone H3; HIST1H3A

ANTIBODY TYPE: Polyclonal

HOST/ISOTYPE: Rabbit / IgG

IMMUNOGEN: A synthetic methylated peptide targeting residues surrounding Lysine 36 of human Histone H3

MOLECULAR WEIGHT: 15 kDa

PURIFICATION: Affinity purified

FORM: Liquid

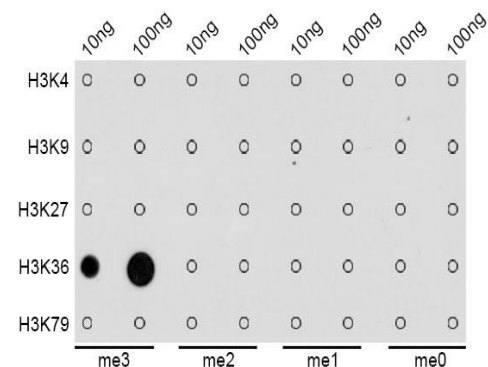
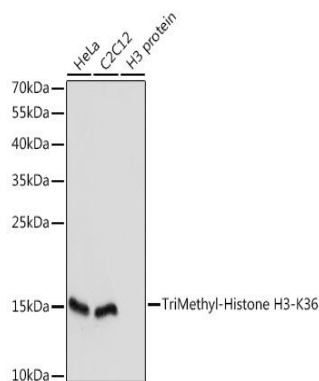
FORMULATION: In PBS with 0.02% sodium azide, 50% glycerol, pH 7.3

SPECIES REACTIVITY: Human, Mouse, Rat

STORAGE CONDITIONS: Store at -20°C. Avoid freeze / thaw cycles

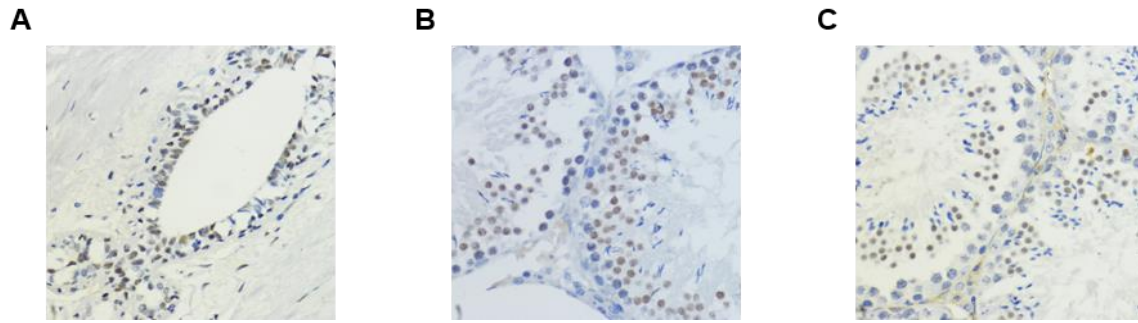
APPLICATIONS AND USAGE: WB 1:500 - 1:2000, IHC 1:50 - 1:200, IF 1:50 - 1:200, ChIP 1:20 - 1:100

Note: This information is only intended as a guide. The optimal dilutions must be determined by the user

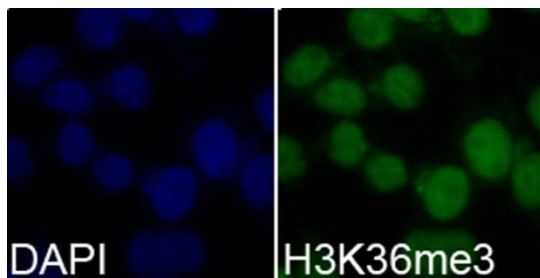


Western blot analysis of H3K36me3 expression in HeLa cells and H3 protein. HRP-conjugated goat anti-rabbit IgG (H+L) was used as secondary antibody at 1:10000 dilution. 25 µg of lysates/proteins were loaded per lane. 3% nonfat dry milk in TBST was used as blocking buffer.

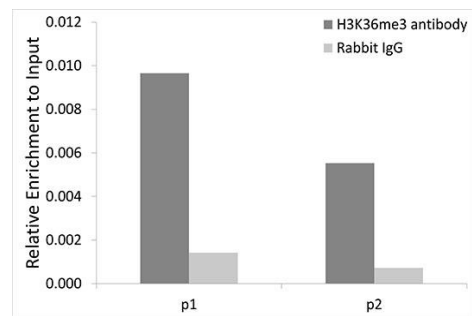
Dot-blot analysis of methylation peptides using Anti-H3K36me3 antibody.



Immunohistochemistry of paraffin-embedded human breast (A), rat testis (B), and mouse testis (C) using Anti-H3K36me3 antibody at dilution of 1:100 (40x lens).



Immunofluorescence analysis of 293T cells using Anti-H3K36me3 antibody. Blue: DAPI for nuclear staining.



Chromatin immunoprecipitation analysis of extracts of 293T cells, using Anti-H3K36me3 antibody and rabbit IgG. P1 and P2 were located on GAPDH gene. The amount of immunoprecipitated DNA was checked by quantitative PCR. Histogram was constructed by the ratios of the immunoprecipitated DNA to the input.

RELATED PRODUCTS:

H3K36me1 polyclonal antibody (6817)
 Phospho Histone H3 (Ser10) Antibody (A1943)
 H3 Pan Antibody (6806)
 H3K36me2 Antibody (6805)

FOR RESEARCH USE ONLY! Not to be used on humans.