

Anti-MCT4 Antibody

CATALOG NO.: **A2034-100 (100 µl)**

BACKGROUND DESCRIPTION: Monocarboxylate transporter 4 (MCT4), also known as solute carrier family 16 member 3 (SLC16A3) is a proton-coupled lactate transporter protein that facilitates the transport of monocarboxylates such as lactate, pyruvate and ketones across the plasma membrane. MCT4 is expressed in glycolytic tissues such as fast-twitch muscles, neural layer of the retina, chondrocytes and activated macrophages. MCT4 is widely investigated in cancer cells, however the expression in tumor cells depends on tumor type.

ALTERNATE NAMES: MCT4; MCT5; Monocarboxylate transporter 5; MCT 5; Monocarboxylate transporter 4; MCT 4; Solute carrier family 16 member 4

ANTIBODY TYPE: Polyclonal

HOST/ISOTYPE: Rabbit / IgG

IMMUNOGEN: Recombinant full-length protein of human MCT4

MOLECULAR WEIGHT: 49 kDa

PURIFICATION: Affinity purified

FORM: Liquid

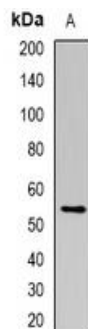
FORMULATION: In 0.42% Potassium phosphate; 0.87% NaCl; pH 7.3; 30% glycerol; and 0.01% sodium azide

SPECIES REACTIVITY: Human, Mouse

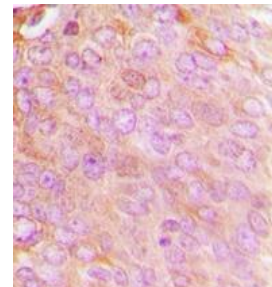
STORAGE CONDITIONS: Store at -20°C. Avoid freeze / thaw cycles

APPLICATIONS AND USAGE: WB 1:1000 - 1:2000, IHC 1:50 - 1:200

Note: This information is only intended as a guide. The optimal dilutions must be determined by the user



Western blot analysis of MCT4 expression in mouse skeletal muscle (A) whole cell lysates.



Immunohistochemical analysis of MCT4 staining in human breast cancer formalin fixed paraffin embedded tissue section. The section was pre-treated using heat mediated antigen retrieval with sodium citrate buffer (pH 6.0), then incubated with the antibody at RT and detected using an HRP conjugated compact polymer system. DAB was used as the chromogen. The section was then counterstained with hematoxylin and mounted with DPX.

RELATED PRODUCTS:

Anti-HIF-1-alpha, Rabbit Monoclonal Antibody (A1128)

AMPKα Antibody (3113)

PGC-1alpha Antibody (3934)

Anti-CD147 Antibody (BSG/963) (A1475)