

# Anti-SMARCB1 Antibody

CATALOG NO.: A2040-100 (100 µl)

**BACKGROUND DESCRIPTION:** The protein encoded by this gene is part of a complex that relieves repressive chromatin structures, allowing the transcriptional machinery to access its targets more effectively. The encoded nuclear protein may also bind to and enhance the DNA joining activity of HIV-1 integrase. This gene has been found to be a tumor suppressor, and mutations in it have been associated with malignant rhabdoid tumors. Alternatively spliced transcript variants have been found for this gene.

**ALTERNATE NAMES:** SWI/SNF-related matrix-associated actin-dependent regulator of chromatin subfamily B member 1 (BRG1-associated factor 47) (BAF47) (Integrase interactor 1 protein) (SNF5 homolog) (hSNF5), SMARCB1, BAF47 INI1 SNF5L1

**ANTIBODY TYPE:** Polyclonal

**HOST/ISOTYPE:** Rabbit / IgG

**IMMUNOGEN:** Recombinant Human SMARCB1 protein

**MOLECULAR WEIGHT:** 45 kDa

**PURIFICATION:** Affinity purified

**FORM:** Liquid

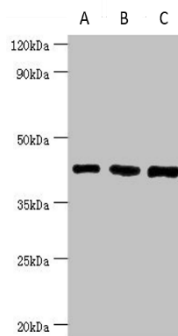
**FORMULATION:** In PBS with 0.02% sodium azide, 50% glycerol, pH 7.3

**SPECIES REACTIVITY:** Human, Mouse

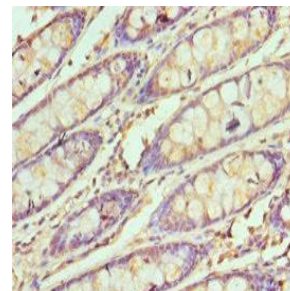
**STORAGE CONDITIONS:** Store at -20°C. Avoid freeze / thaw cycles

**APPLICATIONS AND USAGE:** WB 1:500-1:2000, IHC 1:20-1:200

**Note:** This information is only intended as a guide. The optimal dilutions must be determined by the user



Western blot analysis of SMARCB1 expression in HeLa (A), 293T (B) and Mouse stomach (C) whole cell lysates. Primary antibody concentration used was 8 µg/ml. Secondary Goat anti-rabbit used at 1:10,000 dilution.



Immunohistochemistry of paraffin-embedded human colon tissue using SMARCB1 antibody at dilution of 1:100.

## RELATED PRODUCTS:

ATM Antibody (3813)  
 C-Myc Antibody (6767)  
 ATR Antibody (3767)  
 HDAC2 Antibody (3602)