

Anti-CRKL Antibody

CATALOG NO.: A2041-100 (100 µl)

BACKGROUND DESCRIPTION: This gene encodes a protein kinase containing SH2 and SH3 (src homology) domains which has been shown to activate the RAS and JUN kinase signaling pathways and transform fibroblasts in a RAS-dependent fashion. It is a substrate of the BCR-ABL tyrosine kinase, plays a role in fibroblast transformation by BCR-ABL, and may be oncogenic.

ALTERNATE NAMES: Crk-like protein

ANTIBODY TYPE: Polyclonal

HOST/ISOTYPE: Rabbit / IgG

IMMUNOGEN: KLH-conjugated synthetic peptide targeting a sequence within the center region of human CRKL

MOLECULAR WEIGHT: 34 kDa

PURIFICATION: Affinity purified

FORM: Liquid

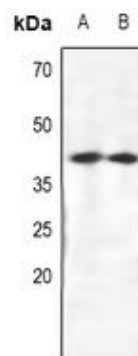
FORMULATION: In 0.42% Potassium phosphate; 0.87% NaCl; pH 7.3; 30% glycerol; and 0.01% sodium azide

SPECIES REACTIVITY: Human, Mouse, Rat

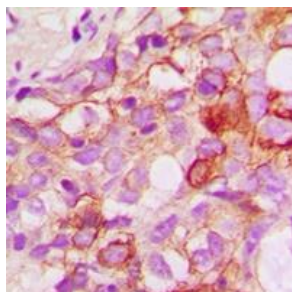
STORAGE CONDITIONS: Store at -20°C. Avoid freeze / thaw cycles

APPLICATIONS AND USAGE: WB 1:500 - 1:1000, IHC 1:50 - 1:100, IF 1:100 - 1:500

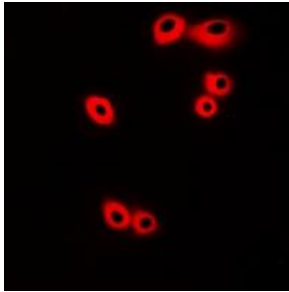
Note: This information is only intended as a guide. The optimal dilutions must be determined by the user



Western blot analysis of CRKL expression in HEK293T (A); SGC7901 (B) whole cell lysates.



Immunohistochemical analysis of CRKL staining in human breast cancer formalin fixed paraffin embedded tissue section. The tissue section was subjected to heat mediated antigen retrieval using sodium citrate buffer at pH 6.0, prior to incubation with the antibody at RT and detection using an HRP conjugated compact polymer system. The chromogen used was DAB. The tissue section was counterstained with hematoxylin and then mounted with DPX.



Immunofluorescent analysis of CRKL staining in HuvEc cells. Formalin-fixed cells were permeabilized with 0.1% Triton X-100 in TBS and blocked with 3% BSA-PBS at RT. Then cells were incubated overnight with primary antibody at 4 C. Cells were washed with PBST and incubated with Alexa Fluor 647-conjugated secondary antibody (red) at RT in the dark.

RELATED PRODUCTS:

Raf1 Antibody (3116)
SRC3 Antibody (3773)
Anti-SHB Antibody (A1694)
c-Jun antibody (3009)

FOR RESEARCH USE ONLY! Not to be used on humans.