

Anti-SMARCA2 Antibody

CATALOG NO.: A2049-100 (100 µg)

BACKGROUND DESCRIPTION: The protein encoded by this gene is a member of the SWI/SNF family of proteins and is highly similar to the brahma protein of *Drosophila*. Members of this family have helicase and ATPase activities and are thought to regulate transcription of certain genes by altering the chromatin structure around those genes. The encoded protein is part of the large ATP-dependent chromatin remodeling complex SNF/SWI, which is required for transcriptional activation of genes normally repressed by chromatin. Alternatively spliced transcript variants encoding different isoforms have been found for this gene, which contains a trinucleotide repeat (CAG) length polymorphism.

ALTERNATE NAMES: Probable global transcription activator SNF2L2 (EC 3.6.4.-) (ATP-dependent helicase SMARCA2) (BRG1-associated factor 190B) (BAF190B) (Protein brahma homolog) (hBRM) (SNF2-alpha) (SWI/SNF-related matrix-associated actin-dependent regulator of chromatin subfamily A member 2), SMARCA2, BAF190B BRM SNF2A SNF2L2

ANTIBODY TYPE: Monoclonal

HOST/ISOTYPE: Rabbit / IgG

IMMUNOGEN: Recombinant Human Probable global transcription activator SNF2L2 protein (700-1216 aa)

PURIFICATION: Protein G purified

FORM: Liquid

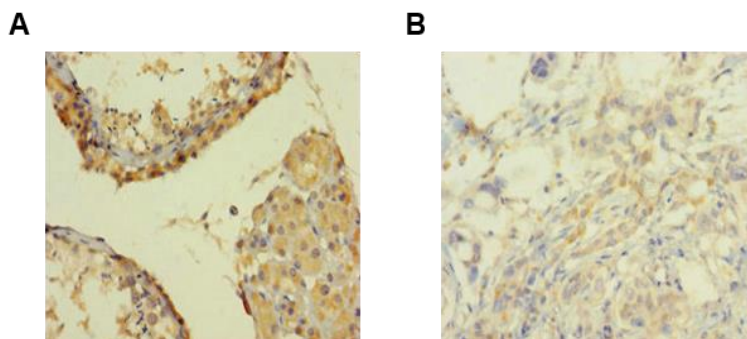
FORMULATION: In 0.01 M PBS pH 7.4, 50% Glycerol, 0.03% Proclin 300

SPECIES REACTIVITY: Human

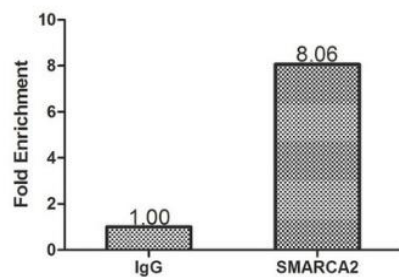
STORAGE CONDITIONS: Store at -20°C. Avoid freeze / thaw cycles

APPLICATIONS AND USAGE: IHC 1:20 - 1:200

Note: This information is only intended as a guide. The optimal dilutions must be determined by the user



Immunohistochemistry of paraffin-embedded human testis (A), and human pancreatic cancer tissue (C) using Anti-SMARCA2 antibody at dilution of 1:100



ChIP analysis using HeLa (1.1×10^6) cells that were cross-linked with formaldehyde, sonicated, and immunoprecipitated with 4 μ g Anti-SMARCA2 antibody or a control normal rabbit IgG. The resulting ChIP DNA was quantified using real-time PCR with primers against the ESR1 pS2 promoter

RELATED PRODUCTS:

ATM Antibody (3813)

EzH2 polyclonal antibody (6838)

Anti-Histone H2AX Rabbit Monoclonal Antibody (A1143)

SMARCA4 Antibody (6156)

FOR RESEARCH USE ONLY! Not to be used on humans.