

# Anti-IL-8 Antibody

**CATALOG NO.:** A2062-100 (100 µg)

**BACKGROUND DESCRIPTION:** The protein encoded by this gene is a member of the CXC chemokine family and is a major mediator of the inflammatory response. The encoded protein is secreted primarily by neutrophils, where it serves as a chemotactic factor by guiding the neutrophils to the site of infection. This chemokine is also a potent angiogenic factor. This gene is believed to play a role in the pathogenesis of bronchiolitis, a common respiratory tract disease caused by viral infection. This gene and other members of the CXC chemokine gene family form a gene cluster in a region of chromosome 4q.

**ALTERNATE NAMES:** Interleukin-8 (IL-8) (C-X-C motif chemokine 8) (Chemokine (C-X-C motif) ligand 8) (Emotakin) (Granulocyte chemotactic protein 1) (GCP-1) (Monocyte-derived neutrophil chemotactic factor) (MDNCF) (Monocyte-derived neutrophil-activating peptide) (MONAP) (Neutrophil-activating protein 1) (NAP-1) (Protein 3-10C) (T-cell chemotactic factor) [Cleaved into: MDNCF-a (GCP/IL-8 protein IV) (IL8/NAP1 form I); Interleukin-8 ((Ala-IL-8)77) (GCP/IL-8 protein II) (IL-8(1-77)) (IL8/NAP1 form II) (MDNCF-b); IL-8(5-77); IL-8(6-77) ((Ser-IL-8)72) (GCP/IL-8 protein I) (IL8/NAP1 form III) (Lymphocyte-derived neutrophil-activating factor) (LYNAP) (MDNCF-c) (Neutrophil-activating factor) (NAF); IL-8(7-77) (GCP/IL-8 protein V) (IL8/NAP1 form IV); IL-8(8-77) (GCP/IL-8 protein VI) (IL8/NAP1 form V); IL-8(9-77) (GCP/IL-8 protein III) (IL8/NAP1 form VI)], CXCL8, IL8

**ANTIBODY TYPE:** Polyclonal

**HOST/ISOTYPE:** Rabbit / IgG

**IMMUNOGEN:** Recombinant Human Interleukin-8 protein (23-99 aa)

**MOLECULAR WEIGHT:** 12 kDa

**PURIFICATION:** Affinity purified

**FORM:** Liquid

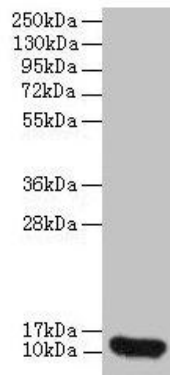
**FORMULATION:** In 0.01 M PBS, 50% glycerol, 0.03% proclin 300, pH 7.4

**SPECIES REACTIVITY:** Human

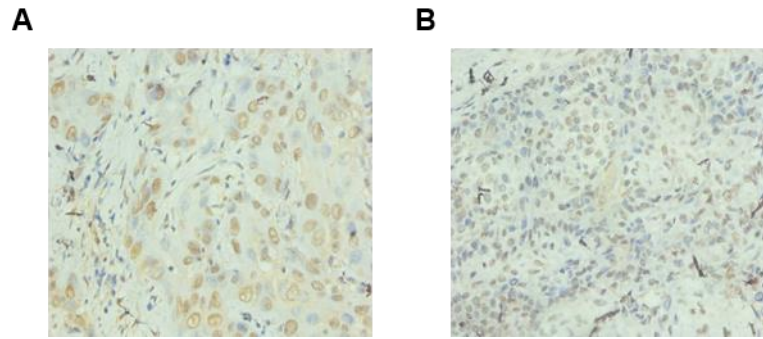
**STORAGE CONDITIONS:** Store at -20°C. Avoid freeze / thaw cycles

**APPLICATIONS AND USAGE:** WB 1:1000-1:5000, IHC 1:20-1:200

**Note:** This information is only intended as a guide. The optimal dilutions must be determined by the user



Western blot analyses of 293T whole cell lysates using Anti-IL-8 antibody. Primary antibody concentration used was at a concentration of 2 µg/ml. Goat polyclonal to rabbit IgG at 1:10,000 dilution was used as secondary antibody.



Immunohistochemistry of paraffin-embedded human liver cancer (A) and human breast cancer (B) using Anti-IL-8 antibody at dilution of 1:100.

**RELATED PRODUCTS:**

CCL2 Antibody (CT) (6730)  
CCL4 Antibody (Center) (6731)  
Anti-CXCR6 Antibody (A2042)  
CXCR4 Antibody (5541)

***FOR RESEARCH USE ONLY! Not to be used on humans.***