

# Anti-HSPB1 (KO validated) Antibody

**CATALOG NO.:** A2074-100 (100 µl)

**BACKGROUND DESCRIPTION:** This gene encodes a member of the small heat shock protein (HSP20) family of proteins. In response to environmental stress, the encoded protein translocates from the cytoplasm to the nucleus and functions as a molecular chaperone that promotes the correct folding of other proteins. This protein plays an important role in the differentiation of a wide variety of cell types. Expression of this gene is correlated with poor clinical outcome in multiple human cancers, and the encoded protein may promote cancer cell proliferation and metastasis, while protecting cancer cells from apoptosis. Mutations in this gene have been identified in human patients with Charcot-Marie-Tooth disease and distal hereditary motor neuropathy.

**ALTERNATE NAMES:** HSPB1; CMT2F; HEL-S-102; HMN2B; HS.76067; HSP27; HSP28; Hsp25; SRP27

**ANTIBODY TYPE:** Polyclonal

**HOST/ISOTYPE:** Rabbit / IgG

**IMMUNOGEN:** Recombinant fusion protein targeting a sequence corresponding to aa 1-120 of human HSPB1

**MOLECULAR WEIGHT:** 25 kDa

**PURIFICATION:** Affinity purified

**FORM:** Liquid

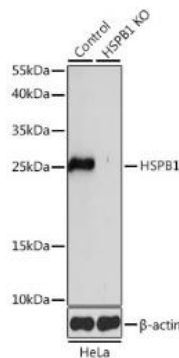
**FORMULATION:** In PBS with 0.02% sodium azide, 50% glycerol, pH 7.3

**SPECIES REACTIVITY:** Human, Mouse, Rat

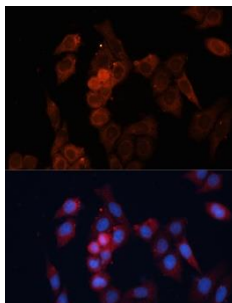
**STORAGE CONDITIONS:** Store at -20°C. Avoid freeze / thaw cycles

**APPLICATIONS AND USAGE:** WB 1:500 - 1:2000, IHC 1:50 - 1:200, IF 1:50 - 1:200

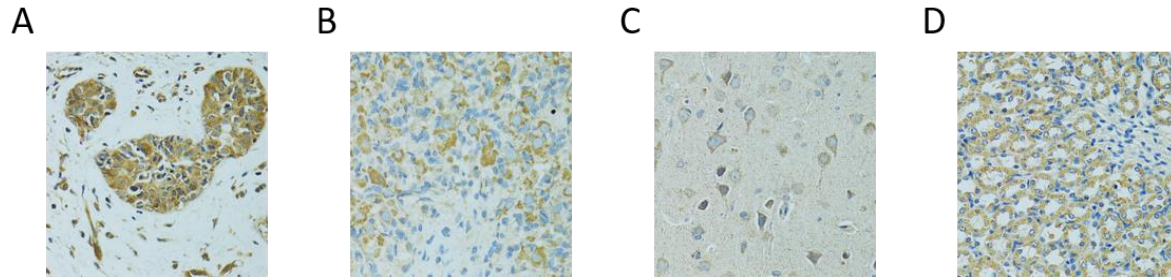
This information is only intended as a guide. The optimal dilutions must be determined by the user



Western blot analysis of control and HSPB1 knockout (KO) HeLa cell extracts using Anti-HSPB1 (KO validated) antibody at 1:1000 dilution. HRP Goat Anti-Rabbit IgG (H+L) was used as secondary antibody at 1:10000 dilution. 25 µg of lysates were loaded per lane. 3% nonfat dry milk in TBST was used as blocking buffer. Detection was performed using ECL Basic Kit. Exposure time: 5s.



Immunofluorescence analysis of HeLa cells using Anti-HSPB1 (KO validated) antibody at dilution of 1:100. Blue: DAPI for nuclear staining.



Immunohistochemistry of paraffin-embedded human breast cancer (A), rat ovary (B), rat brain (C) and mouse kidney (D) using Anti-HSPB1 (KO validated) antibody at dilution of 1:100. (Magnification: 40x).

**RELATED PRODUCTS:**

EGFR Antibody (3782)

Anti-Caspase-3 Rabbit Monoclonal Antibody (A1120)

Anti-p38 MAPK Rabbit Monoclonal Antibody (A1125)

VEGF Antibody (5365)

**FOR RESEARCH USE ONLY! Not to be used on humans.**