

# Anti-LITAF (KO validated) Antibody

CATALOG NO.: A2075-100 (100 µl)

**BACKGROUND DESCRIPTION:** Lipopolysaccharide is a potent stimulator of monocytes and macrophages, causing secretion of tumor necrosis factor-alpha (TNF-alpha) and other inflammatory mediators. This gene encodes lipopolysaccharide-induced TNF-alpha factor, which is a DNA-binding protein and can mediate the TNF-alpha expression by direct binding to the promoter region of the TNF-alpha gene. The transcription of this gene is induced by tumor suppressor p53 and has been implicated in the p53-induced apoptotic pathway. Mutations in this gene cause Charcot-Marie-Tooth disease type 1C (CMT1C) and may be involved in the carcinogenesis of extramammary Paget's disease (EMPD). Multiple alternatively spliced transcript variants have been found for this gene.

**ALTERNATE NAMES:** LITAF; PIG7; SIMPLE; TP53I7

**ANTIBODY TYPE:** Polyclonal

**HOST/ISOTYPE:** Rabbit / IgG

**IMMUNOGEN:** Recombinant fusion protein targeting a sequence around aa 1-161 of human LITAF

**MOLECULAR WEIGHT:** 20 kDa

**PURIFICATION:** Affinity purified

**FORM:** Liquid

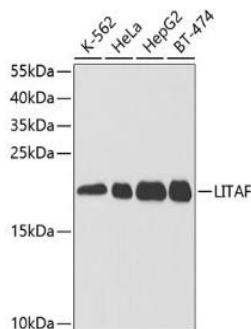
**FORMULATION:** In PBS with 0.02% sodium azide, 50% glycerol, pH 7.3

**SPECIES REACTIVITY:** Human, Mouse, Rat

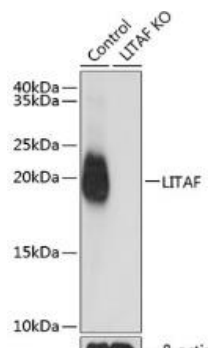
**STORAGE CONDITIONS:** Store at -20°C. Avoid freeze / thaw cycles

**APPLICATIONS AND USAGE:** WB 1:500 - 1:2000, IHC 1:50 - 1:200, IP 1:50 - 1:100

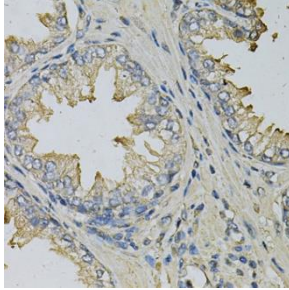
This information is only intended as a guide. The optimal dilutions must be determined by the user



Western blot analysis of K-562, HeLa, HepG2 and BT-474 cell extracts using Anti-LITAF (KO validated) antibody at 1:1000 dilution. HRP Goat Anti-Rabbit IgG (H+L) was used as secondary antibody at 1:10000 dilution. 25 µg of lysates were loaded per lane. 3% nonfat dry milk in TBST was used as blocking buffer. Detection was performed using ECL Basic Kit. Exposure time: 15s.



Western blot analysis of control and LITAF knockout (KO) HeLa cell extracts using Anti-LITAF (KO validated) antibody at 1:1000 dilution. HRP Goat Anti-Rabbit IgG (H+L) was used as secondary antibody at 1:10,000 dilution. 25 µg of lysates were loaded per lane. 3% nonfat dry milk in TBST was used as blocking buffer. Detection was performed using ECL Basic Kit. Exposure time: 1s.



Immunohistochemical analysis of paraffin-embedded human prostate using Anti-LITAF (KO validated) antibody at dilution of 1:100. Magnification: 40x.

**RELATED PRODUCTS:**

AMPK $\alpha$  Antibody (3113)  
Stat6 Antibody (3473R)  
TNF-alpha Antibody (3052R)  
Bcl-6 Antibody (3408)

**FOR RESEARCH USE ONLY! Not to be used on humans.**