

Anti-RAB27A (KO validated) Antibody

CATALOG NO.: A2078-100 (100 µl)

BACKGROUND DESCRIPTION: The protein encoded by this gene belongs to the small GTPase superfamily, Rab family. The protein is membrane-bound and may be involved in protein transport and small GTPase mediated signal transduction. Mutations in this gene are associated with Griscelli syndrome type 2. Alternative splicing occurs at this locus and four transcript variants encoding the same protein have been identified.

ALTERNATE NAMES: RAB27A; GS2; HsT18676; RAB27; RAM

ANTIBODY TYPE: Polyclonal

HOST/ISOTYPE: Rabbit / IgG

IMMUNOGEN: Recombinant fusion protein targeting a sequence around aa 1-221 of human RAB27A

MOLECULAR WEIGHT: 25 kDa

PURIFICATION: Affinity purified

FORM: Liquid

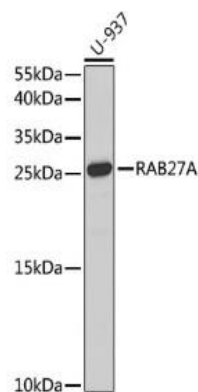
FORMULATION: In PBS with 0.02% sodium azide, 50% glycerol, pH 7.3

SPECIES REACTIVITY: Human, Mouse

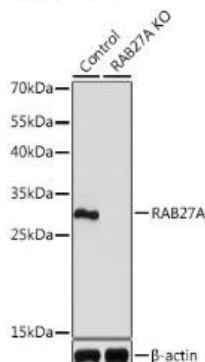
STORAGE CONDITIONS: Store at -20°C. Avoid freeze / thaw cycles

APPLICATIONS AND USAGE: WB 1:500 - 1:2000, IHC 1:50 - 1:200, IF 1:10 - 1:100

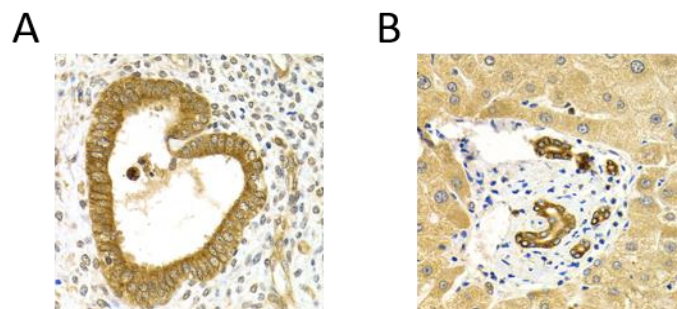
This information is only intended as a guide. The optimal dilutions must be determined by the user



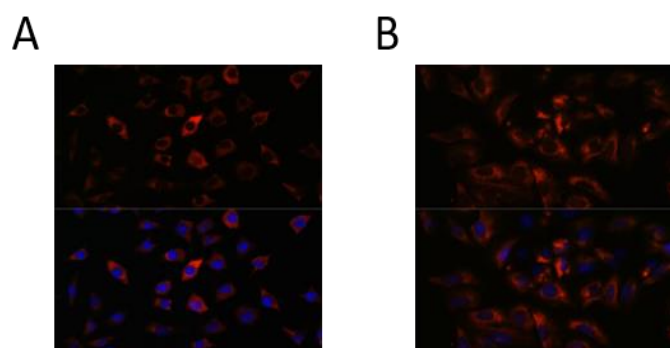
Western blot analysis of U-937 cell extracts using Anti-RAB27A (KO validated) antibody at 1:1000 dilution. HRP Goat Anti-Rabbit IgG (H+L) was used as secondary antibody at 1:10,000 dilution. 25 µg of lysates were loaded per lane. 3% nonfat dry milk in TBST was used as blocking buffer. Detection was performed using ECL Basic Kit.



Western blot analysis of control and RAB27A knockout (KO) HeLa cell extracts using Anti-RAB27A (KO validated) antibody at 1:1000 dilution. HRP Goat Anti-Rabbit IgG (H+L) was used as secondary antibody at 1:10,000 dilution. 25 µg of lysates were loaded per lane. 3% nonfat dry milk in TBST was used as blocking buffer. Detection was performed using ECL Basic Kit. Exposure time: 90s.



Immunohistochemistry of paraffin-embedded human adenomyosis (A) and human liver damage (B) using Anti-RAB27A (KO validated) antibody at dilution of 1:200. Magnification: 40x.



Immunofluorescence analysis of L929 (A) and U2OS (B) cells using Anti-RAB27A (KO validated) antibody at dilution of 1:100. Blue: DAPI for nuclear staining.

RELATED PRODUCTS:

- Anti-RAB25 Antibody (A1882)
- Anti-RAB24 Antibody (A1184)
- Anti-cAMP Antibody (4H2B6) (A1286)
- Anti-RPH3AL Antibody (A1933)

FOR RESEARCH USE ONLY! Not to be used on humans.