

Anti-BSG Antibody

rev 04/20

CATALOG NO.: A2101-100 (100 µl)

BACKGROUND DESCRIPTION: The protein encoded by this gene is a plasma membrane protein that is important in spermatogenesis, embryo implantation, neural network formation, and tumor progression. The encoded protein is also a member of the immunoglobulin superfamily. Multiple transcript variants encoding different isoforms have been found for this gene.

ALTERNATE NAMES: 5A11 antigen; 5F7; Basigin; Blood brain barrier HT7 antigen; Bsg; CD 147; CD147; CD147 antigen; Collagenase stimulatory factor; EMMPRIN; Extracellular matrix metalloproteinase inducer; Leukocyte activation antigen M6; M 6; M6; M6 leukocyte activation antigen; Neurothelin; OK; OK blood group; OK blood group antigen; TCSF; Tumor cell derived collagenase stimulatory factor; Tumor cell-derived collagenase stimulatory factor

ANTIBODY TYPE: Polyclonal

HOST/ISOTYPE: Rabbit / IgG

IMMUNOGEN: KLH-conjugated synthetic peptide targeting a sequence within the C-term region of human CD147

MOLECULAR WEIGHT: 48 kDa

PURIFICATION: Affinity purified

FORM: Liquid

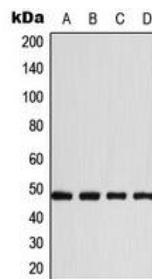
FORMULATION: In 0.42% Potassium phosphate; 0.87% NaCl; pH 7.3; 30% glycerol; and 0.01% sodium azide

SPECIES REACTIVITY: Human, Mouse

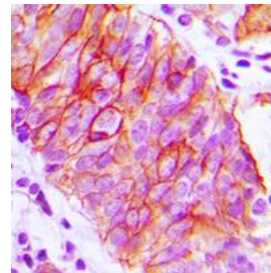
STORAGE CONDITIONS: Store at -20°C. Avoid freeze / thaw cycles

APPLICATIONS AND USAGE: WB 1:500-1:1000, IHC 1:100-1:200

This information is only intended as a guide. The optimal dilutions must be determined by the user



Western blot analysis of A431 (A), HeLa (B), RAW264.7 (C), mouse heart (D) whole cell lysates using Anti-BSG antibody.



Immunohistochemical analysis of formalin fixed paraffin embedded human prostate cancer tissue section using Anti-BSG antibody. The tissue section was subjected to heat mediated antigen retrieval with sodium citrate buffer (pH 6.0), then incubated with the antibody at RT and detected using an HRP conjugated compact polymer system. The chromogen used as DAB, followed by counterstaining with hematoxylin and mounted with DPX.

RELATED PRODUCTS:

Anti-SARS-CoV-2 NP Antibody (Clone# 6F10) (A2060)
 Anti-SARS-CoV-2 NP Antibody (A2061)
 Anti-SARS-CoV-2 Spike S1 Antibody (A3000)
 Anti-SARS-CoV-2 Spike S1 Antibody (Clone# 4C6) (A3001)