

Anti-ATG5 (KO Validated) Antibody

CATALOG NO.: A2119-100 (100 µl)

BACKGROUND DESCRIPTION: The protein encoded by this gene, in combination with autophagy protein 12, functions as an E1-like activating enzyme in a ubiquitin-like conjugating system. The encoded protein is involved in several cellular processes, including autophagic vesicle formation, mitochondrial quality control after oxidative damage, negative regulation of the innate antiviral immune response, lymphocyte development and proliferation, MHC II antigen presentation, adipocyte differentiation, and apoptosis. Several transcript variants encoding different protein isoforms have been found for this gene.

ALTERNATE NAMES: ATG5, APG5, APG5-Like, APG5L, ASP, hAPG5, Autophagy protein 5, APG5-like, Apoptosis-specific protein, autophagy protein, ATG-5, APG-5

ANTIBODY TYPE: Monoclonal

HOST/ISOTYPE: Rabbit / IgG

IMMUNOGEN: Synthetic peptide derived from human ATG5

MOLECULAR WEIGHT: 55 kDa

PURIFICATION: Affinity purified

FORM: Liquid

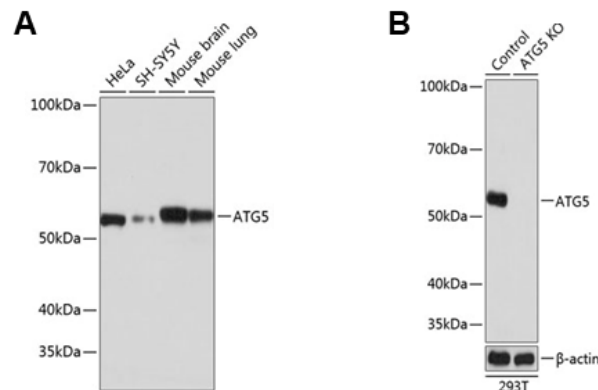
FORMULATION: In PBS with 0.02% sodium azide, 50% glycerol, pH 7.3

SPECIES REACTIVITY: Human, Mouse, Rat

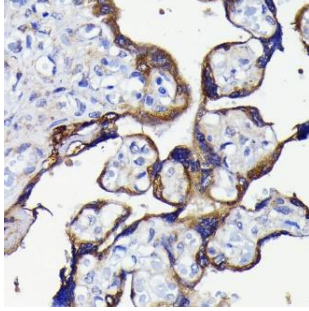
STORAGE CONDITIONS: Store at -20°C. Avoid freeze / thaw cycles

APPLICATIONS AND USAGE: WB 1:500 - 1:2000, IHC 1:50 - 1:200

This information is only intended as a guide. The optimal dilutions must be determined by the user



Western blot analysis of cell lines, tissue extracts (A), control and ATG5 KO cells (B) using Anti-ATG5 (KO Validated) antibody at 1:1000 dilution. HRP Goat Anti-Rabbit IgG (H+L) was used as secondary antibody at 1:10000 dilution. 25 µg of lysates/proteins were loaded per lane. 3% nonfat dry milk in TBST was used as blocking buffer. Detection was done using ECL Basic Kit. Exposure time: 1s.



Immunohistochemistry of paraffin-embedded human placenta using Anti-ATG5 (KO Validated) antibody at dilution of 1:100 (Magnification: 40x).

RELATED PRODUCTS:

Anti-mTOR Rabbit Monoclonal Antibody (A1595)
Beclin 1 Antibody (3663)
APG7/ATG7 Antibody (3907)
AKT1 Antibody (CT) (6744)

FOR RESEARCH USE ONLY! Not to be used on humans.