

# Anti-HK1 (KO Validated) Antibody

05/20

CATALOG NO.: A2125-100 (100 µl)

**BACKGROUND DESCRIPTION:** Hexokinases phosphorylate glucose to produce glucose-6-phosphate, the first step in most glucose metabolism pathways. This gene encodes a ubiquitous form of hexokinase which localizes to the outer membrane of mitochondria. Mutations in this gene have been associated with hemolytic anemia due to hexokinase deficiency. Alternative splicing of this gene results in several transcript variants which encode different isoforms, some of which are tissue-specific.

**ALTERNATE NAMES:** HK; HK1-ta; HK1-tb; HK1-tc; HKD; HKI; HMSNR; HXK1; hexokinase

**ANTIBODY TYPE:** Monoclonal

**HOST/ISOTYPE:** Rabbit / IgG

**IMMUNOGEN:** Synthetic peptide derived from human Hexokinase 1

**MOLECULAR WEIGHT:** 120 kDa

**PURIFICATION:** Affinity purified

**FORM:** Liquid

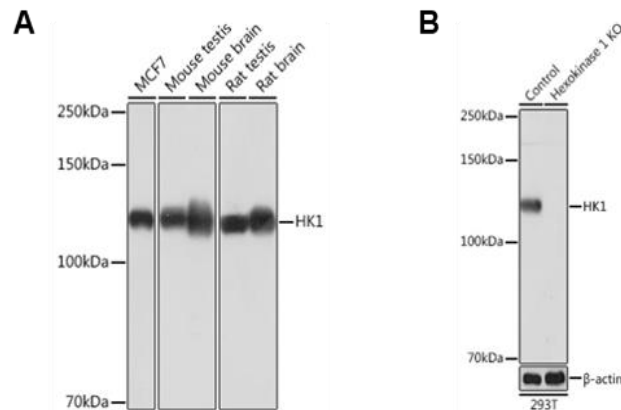
**FORMULATION:** In PBS with 0.02% sodium azide, 50% glycerol, pH 7.3

**SPECIES REACTIVITY:** Human, Mouse, Rat

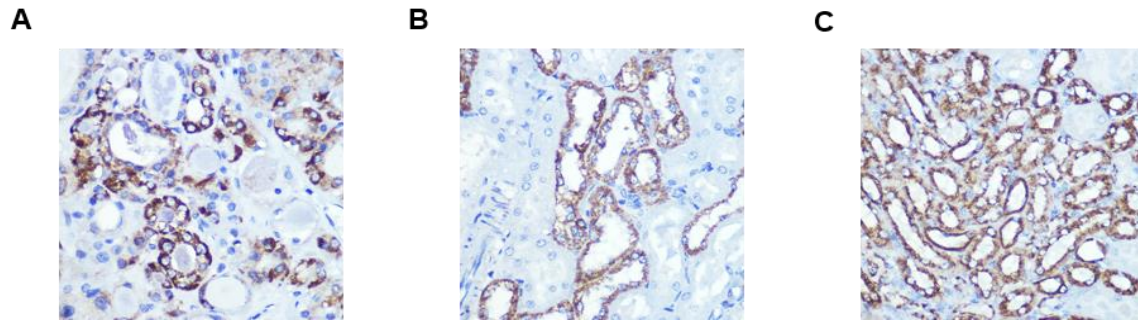
**STORAGE CONDITIONS:** Store at -20°C. Avoid freeze / thaw cycles

**APPLICATIONS AND USAGE:** WB 1:500 - 1:2000, IHC 1:50 - 1:200, IF 1:50 - 1:200

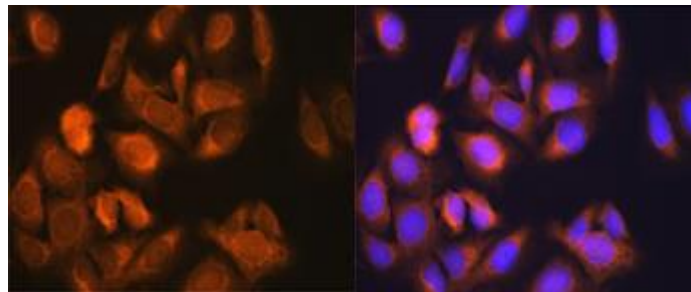
This information is only intended as a guide. The optimal dilutions must be determined by the user



Western blot analysis of MCF7 cells, various tissue extracts (A), control and HK1 KO cells (B) using Anti-HK1 (KO Validated) antibody at 1:1000 dilution. Secondary antibody used was HRP Goat Anti-Rabbit IgG (H+L) at 1:10000 dilution. 25 µg of lysates/proteins were loaded per lane. 3% nonfat dry milk in TBST was used as blocking buffer. ECL Enhanced Kit was used for detection and exposure time was 60s.



Immunohistochemistry analysis of paraffin embedded rat kidney (A), human thyroid cancer (B) and mouse kidney (C) tissues using Anti-HK1 (KO Validated) antibody at a dilution of 1:100. (Magnification: 40x).



Immunofluorescence analysis of U-2 OS cells using Anti-HK1 (KO Validated) antibody at dilution of 1:100 (Magnification: 40x). Blue: DAPI for nuclear staining.

**RELATED PRODUCTS:**

Anti-Hexokinase 1 Antibody (6B8-G11-E7) (A1330)  
AKT1 Antibody (NT) (6745)  
GCK (Glucokinase) Antibody (3153)  
EGFR Antibody (3782)

***FOR RESEARCH USE ONLY! Not to be used on humans.***