

Anti-ROCK2 Antibody (Clone# ARC0744)

rev 10/20

CATALOG NO.: A2129-100 (100 µl)

BACKGROUND DESCRIPTION: The protein encoded by this gene is a serine/threonine kinase that regulates cytokinesis, tumor cell invasion, smooth muscle contraction, the formation of actin stress fibers and focal adhesions, and the activation of the c-fos serum response element. This protein, which is an isozyme of ROCK1 is a target for the small GTPase Rho.

ALTERNATE NAMES: Rho Kinase 2, ROCK-II, Rho associated coiled-coil containing protein kinase 2

ANTIBODY TYPE: Monoclonal

CLONE: ARC0744

HOST/ISOTYPE: Rabbit / IgG

IMMUNOGEN: Synthetic peptide derived from human ROCK2

MOLECULAR WEIGHT: 160 kDa

PURIFICATION: Affinity purified

FORM: Liquid

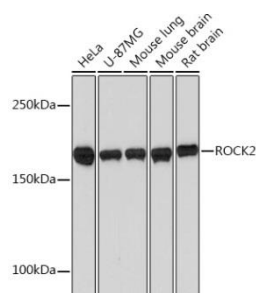
FORMULATION: In PBS with 0.02% sodium azide, 50% glycerol, pH 7.3

SPECIES REACTIVITY: Human, Mouse, Rat

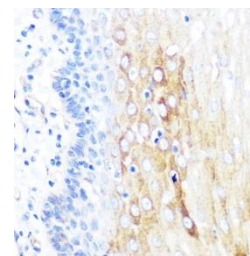
STORAGE CONDITIONS: Store at -20°C. Avoid freeze / thaw cycles

APPLICATIONS AND USAGE: WB 1:500 - 1:2000, IHC 1:50 - 1:200

This information is only intended as a guide. The optimal dilutions must be determined by the user



Western blot analysis of various cell lines and tissue extracts using Anti-ROCK2 antibody (Clone# ARC0744) at 1:1000 dilution. HRP Goat Anti-Rabbit IgG (H+L) was used as secondary antibody at 1:10000 dilution. 25 µg of lysates were loaded per lane. Blocking buffer used was 3% nonfat dry milk in TBST. Detection was performed using ECL Basic Kit. Exposure time was 90s.



Immunohistochemistry of paraffin-embedded human esophageal tissue using Anti-ROCK2 antibody (Clone# ARC0744) at dilution of 1:100. Magnification: 40x.

RELATED PRODUCTS:

Anti-cAMP Antibody (4H2B6) (A1286)
 CXCR4 Antibody (5224)
 PAK6 Antibody (3927)
 ROCK1 Antibody (Clone 12M03) (3545)

FOR RESEARCH USE ONLY! Not to be used on humans

Gentaur Europe BVBA Voortstraat 49, 1910 Kampenhout BELGIUM
 Tel 0032 16 58 90 45 info@gentaur.com

