

Anti-CCR8 Antibody (Clone# ARC0956)

rev 10/20

CATALOG NO.: A2135-100 (100 µl)

BACKGROUND DESCRIPTION: This gene encodes a member of the beta chemokine receptor family, which is predicted to be a seven transmembrane protein similar to G protein-coupled receptors. Chemokines and their receptors are important for the migration of various cell types into the inflammatory sites. This receptor protein preferentially expresses in the thymus. I-309, thymus activation-regulated cytokine (TARC) and macrophage inflammatory protein-1 beta (MIP-1 beta) have been identified as ligands of this receptor. Studies of this receptor and its ligands suggested its role in regulation of monocyte chemotaxis and thymic cell apoptosis. More specifically, this receptor may contribute to the proper positioning of activated T cells within the antigenic challenge sites and specialized areas of lymphoid tissues. This gene is located at the chemokine receptor gene cluster region.

ALTERNATE NAMES: CC-CKR-8; CCR-8; CDw198; CKRL1; CMKBR8; CMKBRL2; CY6; GPRCY6; TER1

ANTIBODY TYPE: Monoclonal

CLONE: ARC0956

HOST/ISOTYPE: Rabbit / IgG

IMMUNOGEN: Synthetic peptide derived from human CCR8

MOLECULAR WEIGHT: 45 kDa

PURIFICATION: Affinity purified

FORM: Liquid

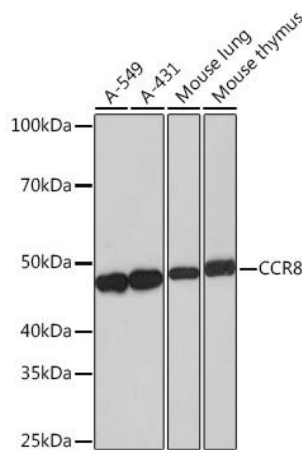
FORMULATION: In PBS with 0.02% sodium azide, 50% glycerol, pH 7.3

SPECIES REACTIVITY: Human, Mouse

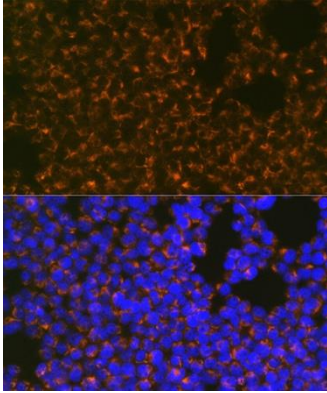
STORAGE CONDITIONS: Store at -20°C. Avoid freeze / thaw cycles

APPLICATIONS AND USAGE: WB 1:500 - 1:2000, IF 1:50 - 1:200

This information is only intended as a guide. The optimal dilutions must be determined by the user



Western blot analysis of A-549, A-431, mouse lung and mouse thymus extracts using Anti-CCR8 antibody (Clone# ARC0956) at 1:1000 dilution. HRP Goat Anti-Rabbit IgG (H+L) was used as secondary antibody at 1:10,000 dilution. 25 µg of lysates was loaded per lane. 3% nonfat dry milk in TBST was used as blocking buffer. Detection was performed using ECL Basic Kit. Exposure time was 60s.



Immunofluorescence analysis of Jurkat cells using Anti-CCR8 antibody (Clone# ARC0956) at dilution of 1:100 (Magnification: 40x). Blue: DAPI for nuclear staining.

RELATED PRODUCTS:

CXCR4 Antibody (5224)
CCR10 Antibody (5210)
Anti-CD4 Rabbit Monoclonal Antibody (RM345) (A1852)
CCR4 Antibody (3817)

FOR RESEARCH USE ONLY! Not to be used on humans.