

# Anti-IL-6 (Siltuximab), Chimeric Antibody

rev 02/21

CATALOG NO.: **A2143-100 (100 µg)**

**BACKGROUND DESCRIPTION:** The research-grade biosimilar is a chimeric (human-murine) IgG1 kappa monoclonal antibody produced in Chinese Hamster Ovary (CHO) cells. This antibody binds to and neutralizes human IL-6, inhibits IL-6 binding to its receptor, and subsequent IL-6 signaling. The original monoclonal antibody received FDA approval to treat patients suffering from multicentric Castleman's disease and negative for HIV and HHV-8. This monoclonal antibody has recently been investigated for the treatment of various forms of cancer such as metastatic renal cell cancer, ovarian cancer, and prostate cancer.

**ALTERNATE NAMES:** CDF, HGF, HSF, BSF2, IL-6, BSF-2, IFNB2, IFN-beta-2, IL6

**ANTIBODY TYPE:** Monoclonal

**CONCENTRATION:** Lot specific

**HOST/ISOTYPE:** Human/Mouse chimeric / IgG1, kappa

**SOURCE:** CHO cells

**IMMUNOGEN:** Siltuximab

**CAS NUMBER:** 541502-14-1

**PURIFICATION:** Protein A purified

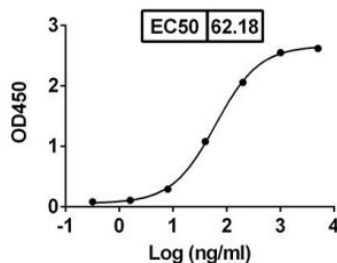
**FORM:** Liquid

**FORMULATION:** In PBS, pH 7.5

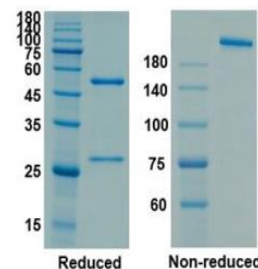
**SPECIES REACTIVITY:** Human

**STORAGE CONDITIONS:** Store at -80°C. Avoid freeze/thaw cycles

This information is only intended as a guide. The optimal dilutions must be determined by the user



Direct ELISA shows that Anti-IL-6 (Siltuximab), Chimeric Antibody can bind to immobilized human IL-6. EC50 = 62.18 ng/ml



SDS-PAGE Analysis to assess purity and integrity of Anti-IL-6 (Siltuximab), Chimeric Antibody

## RELATED PRODUCTS:

Anti-EGFR (Panitumumab), Humanized Antibody (A1050)  
 Anti-IL-6R $\alpha$  (Sarilumab), Human IgG1 Antibody (A2133)  
 Anti-EGFR (Cetuximab), Chimeric Antibody (A1047)  
 Anti-IL-6 receptor (Tocilizumab), Human IgG1 Antibody (A1447)  
 Anti-CD20 (Rituximab), Chimeric Antibody (A1049)

**FOR RESEARCH USE ONLY! Not to be used on humans.**