

Anti-MMP3 recMAb™ Antibody

CATALOG NO.: A2183-100 (100 µg)

BACKGROUND DESCRIPTION: Proteins of the matrix metalloproteinase (MMP) family are involved in the breakdown of extracellular matrix in normal physiological processes, such as embryonic development, reproduction, and tissue remodeling, as well as in disease processes, such as arthritis and metastasis. Most MMPs are secreted as inactive pro-proteins, which are activated when cleaved by extracellular proteinases. This gene encodes an enzyme which degrades fibronectin, laminin, collagens III, IV, IX, and X, and cartilage proteoglycans. The enzyme is thought to be involved in wound repair, progression of atherosclerosis, and tumor initiation. The gene is part of a cluster of MMP genes that localize to chromosome 11q22.3.

ALTERNATE NAMES: CHDS6, Matrix metalloproteinase 3, Matrix metalloproteinase-3, Proteoglycanase, SL1, STMY1, STR1, Stromelysin-1, Transin 1, STMY, MMP-3

ANTIBODY TYPE: Monoclonal

CLONE: rMMP3/1730

CONCENTRATION: 1 mg/ml

HOST/ISOTYPE: Mouse / IgG1, kappa

IMMUNOGEN: Recombinant full-length human MMP3 protein

MOLECULAR WEIGHT: 57 kDa

PURIFICATION: Protein A/G purified

FORM: Liquid

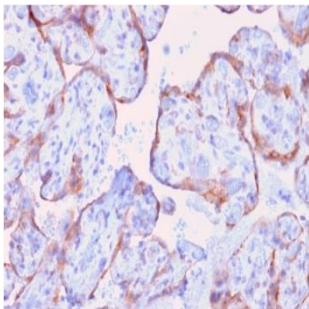
FORMULATION: In 10 mM PBS

SPECIES REACTIVITY: Human.

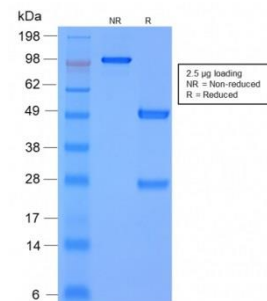
STORAGE CONDITIONS: Store at -20°C. Avoid freeze/thaw cycles

APPLICATIONS AND USAGE: IHC (1-2 µg/ml)

This information is only intended as a guide. The optimal dilutions must be determined by the user



Immunohistochemical analysis of paraffin embedded formalin fixed human spleen using Anti-MMP3 recMAb™ antibody.



SDS-PAGE Analysis to confirm the purity and integrity of Anti-MMP3 recMAb™ antibody.

RELATED PRODUCTS:

CCL2 Antibody (CT) (6730)
 IGF-BP3 Antibody (5720)
 Anti-STAT3 Antibody (A1670)
 MMP-1 Antibody (5781)