

# Anti-SATB2 recMAb™ Antibody

08/20

**CATALOG NO.:** A2184-100 (100 µg)

**BACKGROUND DESCRIPTION:** This gene encodes a DNA binding protein that specifically binds nuclear matrix attachment regions. The encoded protein is involved in transcription regulation and chromatin remodeling. Defects in this gene are associated with isolated cleft palate and cognitive disability. Alternate splicing results in multiple transcript variants that encode the same protein.

**ALTERNATE NAMES:** DNA-binding protein SATB2; GLSS; SATB homeobox 2; Special AT-rich sequence-binding protein 2

**ANTIBODY TYPE:** Monoclonal

**CLONE:** SATB2/4374R

**CONCENTRATION:** 1 mg/ml

**HOST/ISOTYPE:** Rabbit / IgG

**IMMUNOGEN:** Synthetic peptide targeting residues around aa 200-300 of human SATB2

**MOLECULAR WEIGHT:** 83 kDa

**PURIFICATION:** Protein A/G purified

**FORM:** Liquid

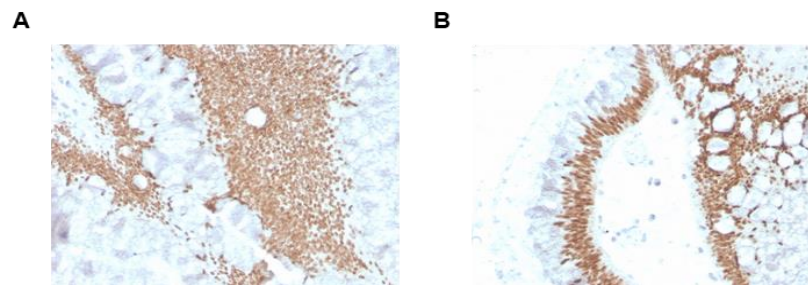
**FORMULATION:** In 10 mM PBS

**SPECIES REACTIVITY:** Human

**STORAGE CONDITIONS:** Store at -20°C. Avoid freeze/thaw cycles

**APPLICATIONS AND USAGE:** IHC (1-2 µg/ml)

**This information is only intended as a guide. The optimal dilutions must be determined by the user**



Immunohistochemical analysis of paraffin-embedded formalin-fixed human colon carcinoma (A & B) using Anti-SATB2 recMAb™ antibody.

## RELATED PRODUCTS:

Nanog Antibody (3165)  
 HDAC1 Antibody (3601)  
 FOXP3 Antibody (3709)  
 Runx2 Antibody (6773)