

Anti-YBX1 recMAb™ Antibody

CATALOG NO.: A2187-100 (100 µg)

BACKGROUND DESCRIPTION: This gene encodes a highly conserved cold shock domain protein that has broad nucleic acid binding properties. The encoded protein functions as both a DNA and RNA binding protein and has been implicated in numerous cellular processes including regulation of transcription and translation, pre-mRNA splicing, DNA repair and mRNA packaging. This protein is also a component of messenger ribonucleoprotein (mRNP) complexes and may have a role in microRNA processing. This protein can be secreted through non-classical pathways and functions as an extracellular mitogen. Aberrant expression of the gene is associated with cancer proliferation in numerous tissues. This gene may be a prognostic marker for poor outcome and drug resistance in certain cancers. Alternate splicing results in multiple transcript variants. Pseudogenes of this gene are found on multiple chromosomes.

ALTERNATE NAMES: BP-8, CSDA2, CSDB, DBPB, MDR-NF1, NSEP-1, NSEP1, YB-1, YB1, CBF-A, EFI-A

ANTIBODY TYPE: Monoclonal

CLONE: rYBX1/2430

CONCENTRATION: 1 mg/ml

HOST/ISOTYPE: Mouse / IgG1, kappa

IMMUNOGEN: Recombinant human full-length YBX1 protein

MOLECULAR WEIGHT: 36 kDa

PURIFICATION: Protein A/G purified

FORM: Liquid

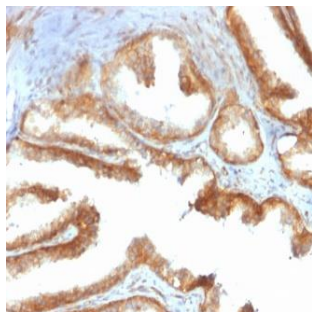
FORMULATION: In 10 mM PBS

SPECIES REACTIVITY: Human

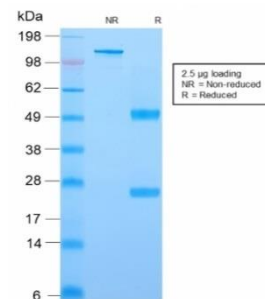
STORAGE CONDITIONS: Store at -20°C. Avoid freeze/thaw cycles

APPLICATIONS AND USAGE: IHC (1-2 µg/ml)

This information is only intended as a guide. The optimal dilutions must be determined by the user



Immunohistochemical analysis of paraffin embedded formalin fixed human prostate carcinoma using Anti-YBX1 recMAb™ antibody.



SDS-PAGE Analysis to confirm the purity and integrity of Anti-YBX1 recMAb™ antibody.

RELATED PRODUCTS:

p44/42 MAPK (Erk1/2) Antibody (3085R)

Anti-ANXA2 Antibody (A1748)

GSK-3b Antibody (3494)

Anti-Akt1 Rabbit Monoclonal Antibody (A1117)