

recMAb™ Anti-ITGB3 Antibody

rev 04/21

CATALOG NO.: A2189-100 (100 µg)

BACKGROUND DESCRIPTION: The ITGB3 protein product is the integrin beta chain beta 3. Integrins are integral cell-surface proteins composed of an alpha chain and a beta chain. A given chain may combine with multiple partners resulting in different integrins. Integrin beta 3 is found along with the alpha IIb chain in platelets. Integrins are known to participate in cell adhesion as well as cell-surface mediated signaling.

ALTERNATE NAMES: GT, CD61, GP3A, BDPLT2, GPIIb, BDPLT16, HPA 1, HPA 4, Integrin beta-3, NAIT, Platelet fibrinogen receptor beta subunit, Platelet glycoprotein IIIa, PTP

ANTIBODY TYPE: Monoclonal

CLONE: rITGB3/1713

CONCENTRATION: 1 mg/ml

HOST/ISOTYPE: Mouse / IgG1, kappa

IMMUNOGEN: Recombinant full-length human CD61 protein

MOLECULAR WEIGHT: 105 kDa

PURIFICATION: Protein A/G purified

FORM: Liquid

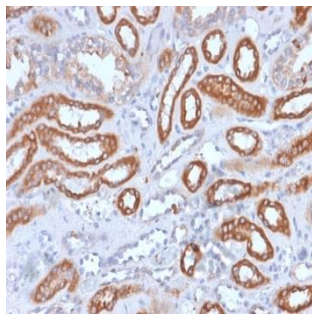
FORMULATION: In 10 mM PBS

SPECIES REACTIVITY: Human

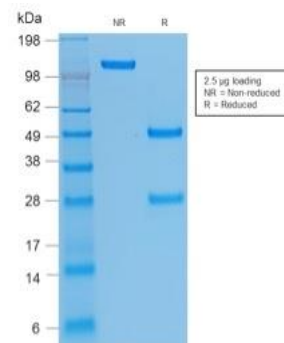
STORAGE CONDITIONS: Store at -20 °C. Avoid freeze/thaw cycles

APPLICATIONS AND USAGE: IHC (1-2 µg/ml)

This information is only intended as a guide. The optimal dilutions must be determined by the user



Immunohistochemical analysis of paraffin embedded formalin fixed human spleen using Anti-ITGB3 recMAb™ antibody.



SDS-PAGE analysis to confirm the purity and integrity of the Anti-ITGB3 recMAb™ antibody.

RELATED PRODUCTS:

p44/42 MAPK (Erk1/2) Antibody (3085R)
 Anti-Src (KO Validated) Antibody (A2123)
 YAP1 Antibody (3815)
 PAK4 Antibody (3444)