

# Anti-MUC1 recMAb™ Antibody

**CATALOG NO.:** A2191-100 (100 µg)

**BACKGROUND DESCRIPTION:** This gene encodes a membrane-bound protein that is a member of the mucin family. Mucins are O-glycosylated proteins that play an essential role in forming protective mucous barriers on epithelial surfaces. These proteins also play a role in intracellular signaling. This protein is expressed on the apical surface of epithelial cells that line the mucosal surfaces of many different tissues including the lung, breast stomach, and pancreas. This protein is proteolytically cleaved into alpha and beta subunits that form a heterodimeric complex. The N-terminal alpha subunit functions in cell-adhesion and the C-terminal beta subunit is involved in cell signaling. Overexpression, aberrant intracellular localization, and changes in glycosylation of this protein have been associated with carcinomas. This gene is known to contain a highly polymorphic variable number tandem repeats (VNTR) domain. Alternate splicing results in multiple transcript variants.

**ALTERNATE NAMES:** EMA, MCD, PEM, PUM, KL-6, MAM6, MCKD, PEMT, CD227, H23AG, MCKD1, MUC-1, ADMCKD, ADMCKD1, CA 15-3, MUC-1/X, MUC1/ZD, MUC-1/SEC

**ANTIBODY TYPE:** Monoclonal

**CLONE:** MUC1/2278R

**CONCENTRATION:** 1 mg/ml

**HOST/ISOTYPE:** Rabbit / IgG

**IMMUNOGEN:** Recombinant full-length human MUC1 protein

**MOLECULAR WEIGHT:** 120 kDa

**PURIFICATION:** Protein A/G purified

**FORM:** Liquid

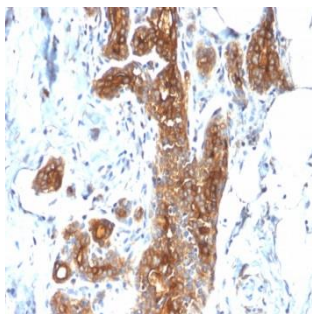
**FORMULATION:** In 10 mM PBS

**SPECIES REACTIVITY:** Human

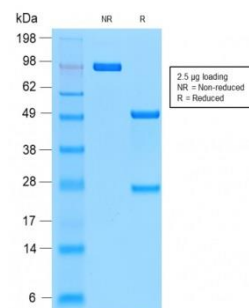
**STORAGE CONDITIONS:** Store at -20°C. Avoid freeze/thaw cycles

**APPLICATIONS AND USAGE:** IHC (1-2 µg/ml)

This information is only intended as a guide. The optimal dilutions must be determined by the user



Immunohistochemical analysis of paraffin embedded formalin fixed human breast carcinoma using Anti-MUC1 recMAb™ antibody.



SDS-PAGE analysis to confirm the purity and integrity of Anti-MUC1 recMAb™ antibody.

## RELATED PRODUCTS:

APP Antibody (CT) (5045)

Anti-Src (KO Validated) Antibody (A2123)

EGFR Antibody (3782)

Anti-CD17 Antibody (A1007)