

Anti-CD137 recMAb™ Antibody

08/20

CATALOG NO.: A2192-100 (100 µg)

BACKGROUND DESCRIPTION: The protein encoded by this gene is a member of the TNF-receptor superfamily. This receptor contributes to the clonal expansion, survival, and development of T cells. It can also induce proliferation in peripheral monocytes, enhance T cell apoptosis induced by TCR/CD3 triggered activation, and regulate CD28 co-stimulation to promote Th1 cell responses. The expression of this receptor is induced by lymphocyte activation. TRAF adaptor proteins have been shown to bind to this receptor and transduce the signals leading to activation of NF-κB.

ALTERNATE NAMES: ILA, 4-1BB, CD137, CDw137, TNFRSF9

ANTIBODY TYPE: Monoclonal

CLONE: 4-1BB/4552R

CONCENTRATION: 1 mg/ml

HOST/ISOTYPE: Rabbit / IgG

IMMUNOGEN: Recombinant fragment (aa 19-188) of human CD137 protein

MOLECULAR WEIGHT: 48 kDa

PURIFICATION: Protein A/G purified

FORM: Liquid

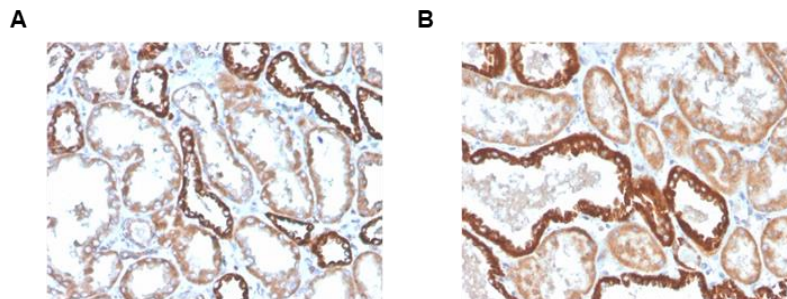
FORMULATION: In 10 mM PBS

SPECIES REACTIVITY: Human

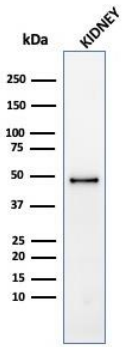
STORAGE CONDITIONS: Store at -20°C. Avoid freeze/thaw cycles

APPLICATIONS AND USAGE: WB (1-2 µg/ml), IHC (1-2 µg/ml)

This information is only intended as a guide. The optimal dilutions must be determined by the user



Immunohistochemical analysis of paraffin embedded formalin fixed human kidney using Anti-CD137 recMAb™ antibody.



Western blot analysis of human kidney tissue lysate using Anti-CD137 recMAb™ antibody.

RELATED PRODUCTS:

TRAF3 Antibody (3563)

Anti-PD-1 (CD279), Rabbit Monoclonal Antibody (A1825)

Anti-PD-L1 (CD274) (B7-H1), Rabbit Monoclonal Antibody (A1824)

TNF-alpha Antibody (3053R)

FOR RESEARCH USE ONLY! Not to be used on humans.