

Anti-CD209 recMAb™ Antibody

08/20

CATALOG NO.: A2193-100 (100 µg)

BACKGROUND DESCRIPTION: This gene encodes a C-type lectin that functions in cell adhesion and pathogen recognition. This receptor recognizes a wide range of evolutionarily divergent pathogens with a large impact on public health, including leprosy and tuberculosis mycobacteria, the Ebola, hepatitis C, HIV-1 and Dengue viruses, and the SARS coronavirus. The protein is organized into four distinct domains: a C-terminal carbohydrate recognition domain, a flexible tandem-repeat neck domain, a transmembrane region, and an N-terminal cytoplasmic domain involved in internalization. This gene is closely related in terms of both sequence and function to a neighboring gene, CLEC4M (Gene ID: 10332), also known as L-SIGN. The two genes differ in viral recognition and expression patterns, with this gene showing high expression on the surface of dendritic cells. Polymorphisms in the neck region are associated with protection from HIV-1 infection, while single nucleotide polymorphisms in the promoter of this gene are associated with differing resistance and susceptibility to and severity of the infectious disease, including rs4804803, which is associated with SARS severity.

ALTERNATE NAMES: CDSIGN, CLEC4L, DC-SIGN, DC-SIGN1, CIRE, DCSIGN, SIGNR5, SIGN-R1

ANTIBODY TYPE: Monoclonal

CLONE: C209/2749R

CONCENTRATION: 1 mg/ml

HOST/ISOTYPE: Rabbit / IgG

IMMUNOGEN: Recombinant full-length human CD209 protein

MOLECULAR WEIGHT: 45 kDa

PURIFICATION: Protein A/G purified

FORM: Liquid

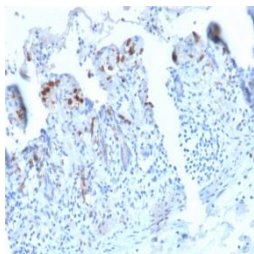
FORMULATION: In 10 mM PBS

SPECIES REACTIVITY: Human

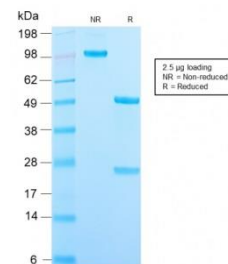
STORAGE CONDITIONS: Store at -20°C. Avoid freeze/thaw cycles

APPLICATIONS AND USAGE: IHC (1-2 µg/ml)

This information is only intended as a guide. The optimal dilutions must be determined by the user



Immunohistochemical analysis of paraffin embedded formalin fixed human small intestine using Anti-CD209 recMAb™ antibody.



SDS-PAGE analysis to confirm the purity and integrity of Anti-CD209 recMAb™ antibody.

RELATED PRODUCTS:

Anti-CD50 / ICAM-3 Antibody (Clone 186-2G9) (A1551)
 Anti-Carcinoembryonic Antigen Antibody (C66/1260) (A1464)
 Anti-CD28 Antibody (A1076)
 ICAM-2 Antibody (3926)