

# Anti-PAX5 recMAb™ Antibody

08/20

**CATALOG NO.:** A2195-100 (100 µg)

**BACKGROUND DESCRIPTION:** This gene encodes a member of the paired box (PAX) family of transcription factors. The central feature of this gene family is a novel, highly conserved DNA-binding motif, known as the paired box. Paired box transcription factors are important regulators in early development, and alterations in the expression of their genes are thought to contribute to neoplastic transformation. This gene encodes the B-cell lineage specific activator protein that is expressed at early, but not late stages of B-cell differentiation. Its expression has also been detected in developing CNS and testis and so the encoded protein may also play a role in neural development and spermatogenesis. This gene is located at 9p13, which is involved in t(9;14)(p13;q32) translocations recurring in small lymphocytic lymphomas of the plasmacytoid subtype, and in derived large-cell lymphomas. This translocation brings the potent E-mu enhancer of the IgH gene into close proximity of the PAX5 promoter, suggesting that the deregulation of transcription of this gene contributes to the pathogenesis of these lymphomas. Alternative splicing results in multiple transcript variants encoding different isoforms.

**ALTERNATE NAMES:** ALL3, BSAP, Paired box 5, EBB-1, KLP

**ANTIBODY TYPE:** Monoclonal

**CLONE:** rPAX5/2060

**CONCENTRATION:** 1 mg/ml

**HOST/ISOTYPE:** Mouse / IgG1, kappa

**IMMUNOGEN:** Recombinant full-length human PAX5 protein

**MOLECULAR WEIGHT:** 48 kDa

**PURIFICATION:** Protein A/G purified

**FORM:** Liquid

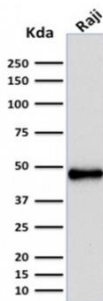
**FORMULATION:** In 10 mM PBS

**SPECIES REACTIVITY:** Human

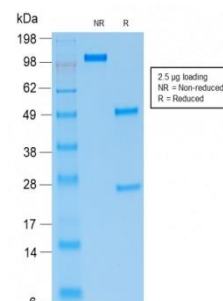
**STORAGE CONDITIONS:** Store at -20°C. Avoid freeze/thaw cycles

**APPLICATIONS AND USAGE:** WB (1-2 µg/ml)

This information is only intended as a guide. The optimal dilutions must be determined by the user



Western blot analysis of Raji cell lysates using Anti-PAX5 recMAb™ antibody.



SDS-PAGE analysis to confirm the purity and integrity of Anti-PAX5 recMAb™ antibody.

## RELATED PRODUCTS:

Anti-CD19, Rabbit Monoclonal Antibody (A1829)  
 Anti-MUM1/IRF4 Rabbit Monoclonal Antibody (RM352) (A1857)  
 Anti-CDX-2 Antibody (IHC402) (A1494)