

Anti-KRT8 recMAb™ Antibody

08/20

CATALOG NO.: A2197-100 (100 µg)

BACKGROUND DESCRIPTION: This gene is a member of the type II keratin family clustered on the long arm of chromosome 12. Type I and type II keratins heteropolymerize to form intermediate-sized filaments in the cytoplasm of epithelial cells. The product of this gene typically dimerizes with keratin 18 to form an intermediate filament in simple single-layered epithelial cells. This protein plays a role in maintaining cellular structural integrity and also functions in signal transduction and cellular differentiation. Mutations in this gene cause cryptogenic cirrhosis. Alternatively spliced transcript variants have been found for this gene.

ALTERNATE NAMES: K8, KO, CK8, CK-8, CYK8, K2C8, CARD2

ANTIBODY TYPE: Monoclonal

CLONE: KRT8/4067R

CONCENTRATION: 1 mg/ml

HOST/ISOTYPE: Rabbit / IgG

IMMUNOGEN: Recombinant human KRT8 protein fragment (aa 343-357)

MOLECULAR WEIGHT: 52 kDa

PURIFICATION: Protein A/G purified

FORM: Liquid

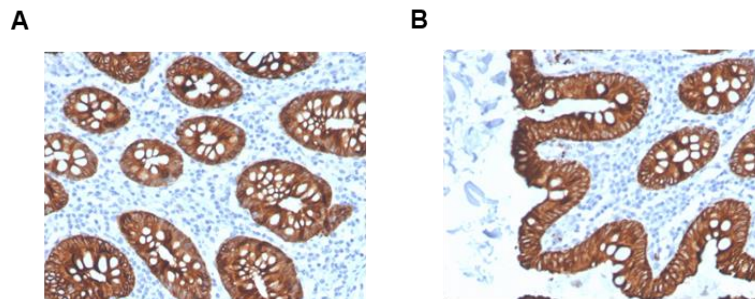
FORMULATION: In 10 mM PBS

SPECIES REACTIVITY: Human

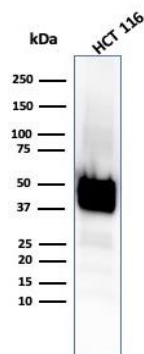
STORAGE CONDITIONS: Store at -20°C. Avoid freeze/thaw cycles

APPLICATIONS AND USAGE: WB (1-2 µg/ml), IHC (1-2 µg/ml)

This information is only intended as a guide. The optimal dilutions must be determined by the user



Immunohistochemical analysis of paraffin embedded formalin fixed human colon using Anti-KRT8 recMAb™ antibody.



Western blot analysis of HCT116 cell lysates using Anti-KRT8 recMAb™ antibody.

RELATED PRODUCTS:

- Anti-TGF- β 1 Antibody (A1456)
- Anti-Cytokeratin 18 Antibody (IHC018) (A1499)
- Anti-SMAD2/3 Antibody (A1214)
- Anti-CFTR Antibody (SPM176) (A1575)

FOR RESEARCH USE ONLY! Not to be used on humans.