

# Anti-MYOD1 recMAb™ Antibody

CATALOG NO.: A2198-100 (100 µg)

**BACKGROUND DESCRIPTION:** This gene encodes a nuclear protein that belongs to the basic helix-loop-helix family of transcription factors and the myogenic factors subfamily. It regulates muscle cell differentiation by inducing cell cycle arrest, a prerequisite for myogenic initiation. The protein is also involved in muscle regeneration. It activates its own transcription which may stabilize commitment to myogenesis.

**ALTERNATE NAMES:** PUM, MYF3, MYOD, bHLHc1, MYODRIF

**ANTIBODY TYPE:** Monoclonal

**CLONE:** MYOD1/2075R

**CONCENTRATION:** 1 mg/ml

**HOST/ISOTYPE:** Rabbit / IgG

**IMMUNOGEN:** Recombinant human full-length MyoD1 protein

**MOLECULAR WEIGHT:** 45 kDa

**PURIFICATION:** Protein A/G purified

**FORM:** Liquid

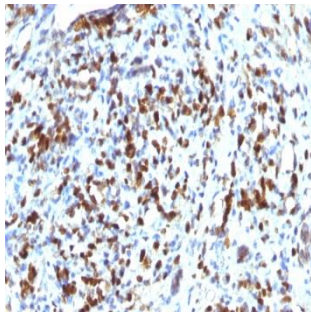
**FORMULATION:** In 10 mM PBS

**SPECIES REACTIVITY:** Human

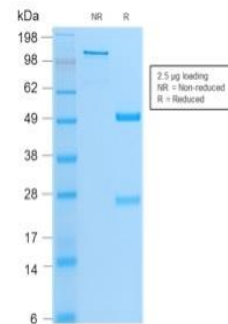
**STORAGE CONDITIONS:** Store at -20°C. Avoid freeze/thaw cycles

**APPLICATIONS AND USAGE:** IHC (1-2 µg/ml)

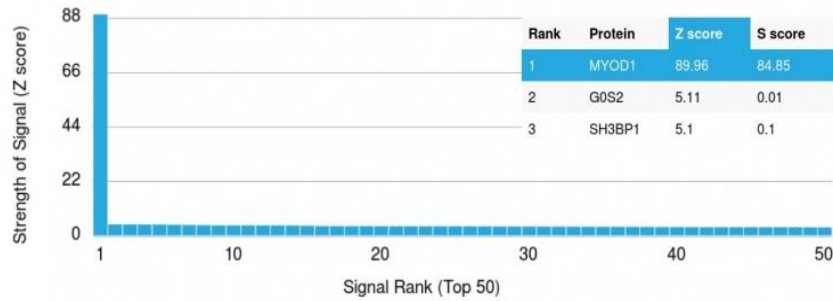
This information is only intended as a guide. The optimal dilutions must be determined by the user



Immunohistochemical analysis of paraffin embedded formalin fixed human rhabdomyosarcoma using Anti-MYOD1 recMAb™ antibody.



SDS-PAGE analysis to confirm the purity and integrity of Anti-MYOD1 recMAb™ antibody.



Protein Array analysis of > 19,000 full-length human proteins on HuProt™ array using the Anti-MYOD1 recMAb™ antibody. Protein array data is represented in the form of the Z-score and S-score. Z-score denotes signal strength of a monoclonal antibody (in conjugation with fluorescently-tagged anti-IgG secondary antibody) which it produces when binding to a particular protein on an array. S-score denotes the specificity of a monoclonal antibody relative to the target protein. S-score is calculated as the difference between the Z-scores. If the S-score is > 2.5, then the monoclonal antibody is specific to its target protein of interest.

#### RELATED PRODUCTS:

Anti-Smad4 Rabbit Monoclonal Antibody (A1605)

Smad7 Antibody (3670)

Anti-SLUG Antibody (A1660)

Anti-CD15 / FUT4 Antibody (FUT4/815 + BRA-4F1) (A1476)

**FOR RESEARCH USE ONLY! Not to be used on humans.**