

Anti-RB1 recMAb™ Antibody

CATALOG NO.: A2199-100 (100 µg)

BACKGROUND DESCRIPTION: The protein encoded by this gene is a negative regulator of the cell cycle and was the first tumor suppressor gene found. The encoded protein also stabilizes constitutive heterochromatin to maintain the overall chromatin structure. The active, hypophosphorylated form of the protein binds transcription factor E2F1. Defects in this gene are a cause of childhood cancer retinoblastoma (RB), bladder cancer, and osteogenic sarcoma.

ALTERNATE NAMES: RB, pRb, OSRC, pp110, p105-Rb, PPP1R130, p110-RB1

ANTIBODY TYPE: Monoclonal

CLONE: RB1/2313R

CONCENTRATION: 1 mg/ml

HOST/ISOTYPE: Rabbit / IgG

IMMUNOGEN: Recombinant human full-length RB1 protein

MOLECULAR WEIGHT: 105 kDa

PURIFICATION: Protein A/G purified

FORM: Liquid

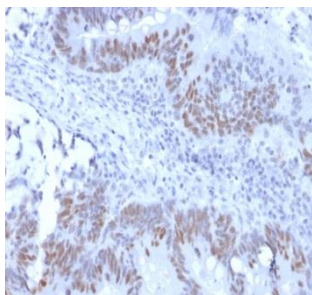
FORMULATION: In 10 mM PBS

SPECIES REACTIVITY: Human, Mouse

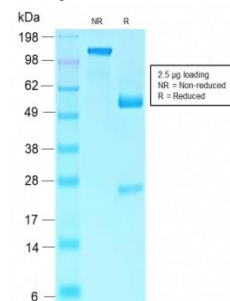
STORAGE CONDITIONS: Store at -20°C. Avoid freeze/thaw cycles

APPLICATIONS AND USAGE: IHC (1-2 µg/ml)

This information is only intended as a guide. The optimal dilutions must be determined by the user



Immunohistochemical analysis of paraffin embedded formalin fixed human colon carcinoma using Anti-RB1 recMAb™ antibody.



SDS-PAGE analysis to confirm the purity and integrity of Anti-RB1 recMAb™ antibody.

RELATED PRODUCTS:

c-Jun Antibody (3702)
 Anti-Cyclin D1, Rabbit Monoclonal Antibody (A1129)
 MAD2 Antibody (3766)
 BRG1 Antibody (3739)

FOR RESEARCH USE ONLY! Not to be used on humans.