

Anti-KRT18 recMAb™ Antibody

08/20

CATALOG NO.: A2202-100 (100 µg)

BACKGROUND DESCRIPTION: KRT18 encodes the type I intermediate filament chain keratin 18. Keratin 18, together with its filament partner keratin 8, is perhaps the most commonly found members of the intermediate filament gene family. They are expressed in single layer epithelial tissues of the body. Mutations in this gene have been linked to cryptogenic cirrhosis. Two transcript variants encoding the same protein have been found for this gene.

ALTERNATE NAMES: K18, CK-18, CYK18

ANTIBODY TYPE: Monoclonal

CLONE: KRT18/2808R

CONCENTRATION: 1 mg/ml

HOST/ISOTYPE: Rabbit / IgG

IMMUNOGEN: Recombinant human full-length KRT18 protein

MOLECULAR WEIGHT: 45 kDa

PURIFICATION: Protein A/G purified

FORM: Liquid

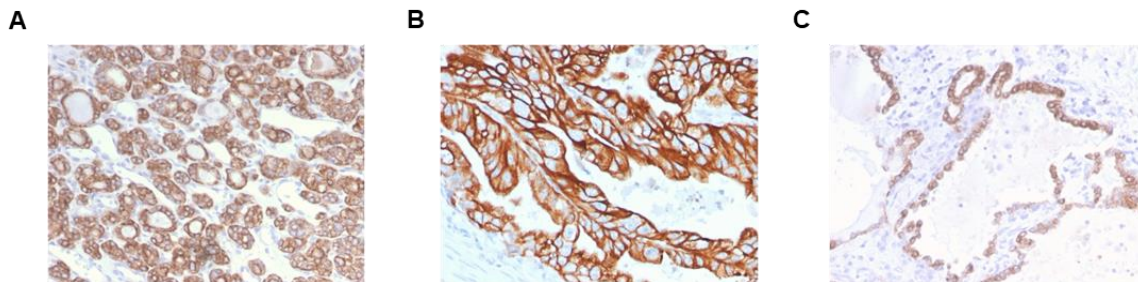
FORMULATION: In 10 mM PBS

SPECIES REACTIVITY: Human

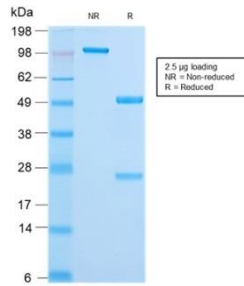
STORAGE CONDITIONS: Store at -20°C. Avoid freeze/thaw cycles

APPLICATIONS AND USAGE: FC (1-2 µg/million cells), IF (1-2 µg/ml), IHC (1-2 µg/ml), WB (1-2 µg/ml)

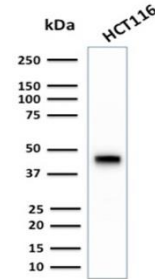
This information is only intended as a guide. The optimal dilutions must be determined by the user



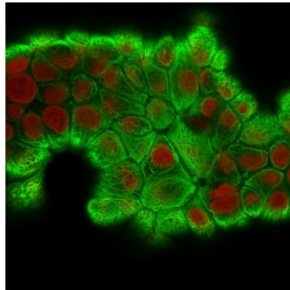
Immunohistochemical analysis of paraffin embedded formalin fixed human thyroid carcinoma (A), human colon carcinoma (B and C) using Anti-KRT18 recMAb™ antibody.



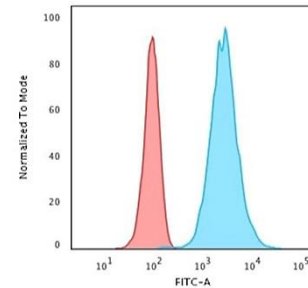
SDS-PAGE analysis to confirm the purity and integrity of Anti-KRT18 recMAb™ antibody.



Western blot analysis of HCT116 cell lysate using Anti-KRT18 recMAb™ antibody.



Flow cytometry analysis of HELA cells using Anti-KRT18 recMAb™ antibody. Secondary antibody used was CF488 conjugated Goat Anti-Mouse IgG antibody (Blue). Isotype control (Red).



Immunofluorescence analysis of MCF-7 cells using Anti-KRT18 recMAb™ antibody. Secondary antibody used was CF488 conjugated Goat Anti-Mouse IgG antibody (Green). Nuclear counterstain used was Reddot (Red).

RELATED PRODUCTS:

- Raf1 Antibody (3116)
- Beclin 1 Antibody (3663)
- Anti-Cytokeratin-8 Rabbit Monoclonal Antibody (A1608)
- Anti-Cytokeratin 19 Antibody (IHC019) (A1517)

FOR RESEARCH USE ONLY! Not to be used on humans.