

Phospho NMDAR2B (Tyr1474) Antibody

08/20

CATALOG NO.: A2208-100 (100 µl)

BACKGROUND DESCRIPTION: This gene encodes a member of the N-methyl-D-aspartate (NMDA) receptor family within the ionotropic glutamate receptor superfamily. The encoded protein is a subunit of the NMDA receptor ion channel which acts as an agonist binding site for glutamate. The NMDA receptors mediate a slow calcium-permeable component of excitatory synaptic transmission in the central nervous system. The NMDA receptors are heterotetramers of seven genetically encoded, differentially expressed subunits including NR1 (GRIN1), NR2 (GRIN2A, GRIN2B, GRIN2C, or GRIN2D) and NR3 (GRIN3A or GRIN3B). The early expression of this gene in development suggests a role in brain development, circuit formation, synaptic plasticity, and cellular migration and differentiation. Naturally occurring mutations within this gene are associated with neurodevelopmental disorders including autism spectrum disorder, attention deficit hyperactivity disorder, epilepsy, and schizophrenia.

ALTERNATE NAMES: Glutamate receptor ionotropic, NMDA 2B, GluN2B, Glutamate [NMDA] receptor subunit epsilon-2, N-methyl D-aspartate receptor subtype 2B, NR2B, N-methyl-D-aspartate receptor subunit 3, NR3, hNR3, MRD6, EIEE27, GRIN2B

ANTIBODY TYPE: Polyclonal

HOST/ISOTYPE: Rabbit / IgG

IMMUNOGEN: KLH-conjugated synthetic peptide targeting a sequence within the C-term region of human NMDAR2B

MOLECULAR WEIGHT: 180 kDa

PURIFICATION: Affinity purified

FORM: Liquid

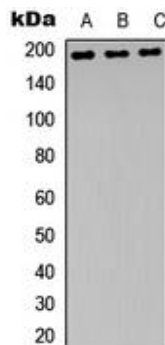
FORMULATION: In 0.42% Potassium phosphate; 0.87% NaCl; pH 7.3; 30% glycerol; and 0.01% sodium azide

SPECIES REACTIVITY: Human, Mouse, Rat, Dog

STORAGE CONDITIONS: Store at -20°C. Avoid freeze/thaw cycles

APPLICATIONS AND USAGE: WB (1:500 - 1:1000)

This information is only intended as a guide. The optimal dilutions must be determined by the user



Western blot analysis of HEK293T UV-treated (A), mouse brain (B), and rat brain (C) whole cell lysates using Phospho NMDAR2B (Tyr1474) antibody.

RELATED PRODUCTS:

Anti-Insulin Antibody (5A6A4) (A1365)

CaMKII Antibody (3383)

GSK-3b Antibody (3494)

Anti-AKT (PH domain) Rabbit Monoclonal Antibody (RM316) (A1835)