

Anti-PD-L1 Humanized Biotinylated Antibody

09/20

CATALOG NO.: A2209-100 (100 µl)

BACKGROUND DESCRIPTION: The research-grade biosimilar is a fully-humanized, Fc engineered monoclonal antibody of IgG1 isotype against the protein programmed cell death-ligand 1 (PD-L1). The antibody blocks the interaction of PD-L1 with PD-1 and induces anti-tumor immune reactivation.

ALTERNATE NAMES: MPDL 3280A, MPDL-3280A, MPDL3280A, RG-7446, RG7446, PD-L1

ANTIBODY TYPE: Monoclonal

HOST/ISOTYPE: Recombinant / IgG1, kappa

SOURCE: CHO cells

ENDOTOXIN LEVELS: < 0.05 EU/ml

IMMUNOGEN: Human programmed cell death 1 ligand 1 (PD-L1)

MOLECULAR WEIGHT: 145 kDa

PURIFICATION: IgG purified from CHO culture supernatant by protein A chromatography

FORM: Liquid

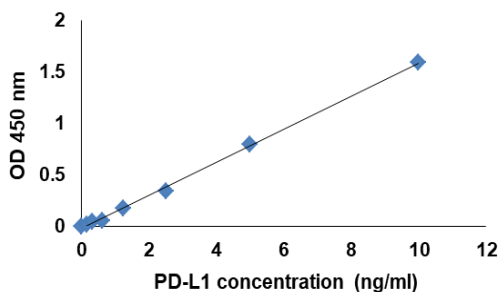
FORMULATION: In PBS, pH 7.4

SPECIES REACTIVITY: Human

STORAGE CONDITIONS: For long term storage store at -20°C. Avoid freeze/thaw cycles

APPLICATIONS AND USAGE: ELISA (1 µg/ml)

This information is only intended as a guide. The optimal dilutions must be determined by the user



Direct ELISA shows that Anti-PD-L1 Humanized Biotinylated antibody can bind to immobilized recombinant human PD-L1 with a linear range of 0-10 ng/ml.

RELATED PRODUCTS:

Anti-PD-1 (Nivolumab), Humanized Antibody (A1307)
 Anti-PD-L1 (Durvalumab), Human IgG1 Antibody (A2109)
 Anti-VEGF (Bevacizumab), Humanized Antibody (A1045)
 Anti-PD-L1 (Avelumab), Human IgG1 Antibody (A2152)
 Anti-PD-1 (Camrelizumab), Humanized Antibody (A2132)
 Anti-PD-1 (Pembrolizumab), Humanized Antibody (A1306)
 Anti-PD-L1 Humanized Antibody (A1305)

FOR RESEARCH USE ONLY! Not to be used on humans.