

# recMAb™ Anti-MYH11 Antibody

CATALOG NO.: A2210-100 (100 µg)

**BACKGROUND DESCRIPTION:** The protein encoded by this gene is a smooth muscle myosin belonging to the myosin heavy chain family. The gene product is a subunit of a hexameric protein that consists of two heavy chain subunits and two pairs of non-identical light chain subunits. It functions as a major contractile protein, converting chemical energy into mechanical energy through the hydrolysis of ATP. The gene encoding a human ortholog of rat NUDE1 is transcribed from the reverse strand of this gene, and its 3' end overlaps with that of the latter. The pericentric inversion of chromosome 16 [inv(16)(p13q22)] produces a chimeric transcript that encodes a protein consisting of the first 165 residues from the N terminus of core-binding factor beta in a fusion with the C-terminal portion of the smooth muscle myosin heavy chain. This chromosomal rearrangement is associated with acute myeloid leukemia of the M4Eo subtype. Alternative splicing generates isoforms that are differentially expressed, with ratios changing during muscle cell maturation. Alternatively spliced transcript variants encoding different isoforms have been identified.

**ALTERNATE NAMES:** AAT4, FAA4, SMHC, SMMHC, KIAA0866, Smooth muscle myosin heavy chain 11, SM1, SM2

**ANTIBODY TYPE:** Monoclonal

**CLONE:** MYH11/2303R

**CONCENTRATION:** 1 mg/ml

**HOST/ISOTYPE:** Rabbit / IgG

**IMMUNOGEN:** Recombinant full-length human MYH11 protein

**MOLECULAR WEIGHT:** 207 kDa

**PURIFICATION:** Protein A/G purified

**FORM:** Liquid

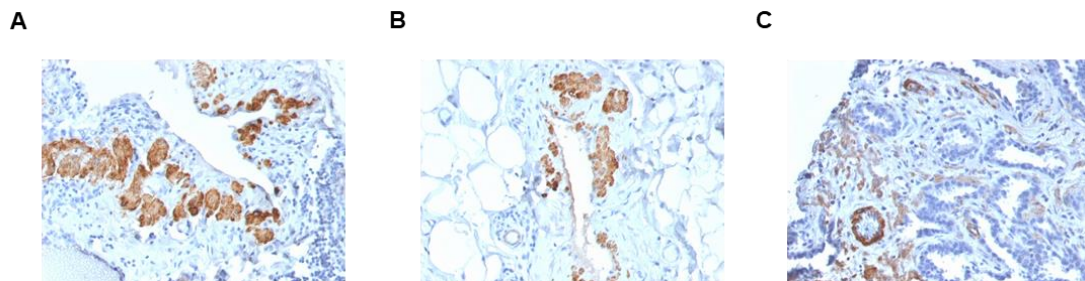
**FORMULATION:** In 10 mM PBS

**SPECIES REACTIVITY:** Human, Rat, Rabbit, Chicken, Bovine, Porcine, Guinea pig, Cat, Dog

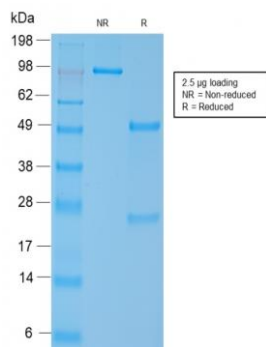
**STORAGE CONDITIONS:** Store at -20°C. Avoid freeze/thaw cycles.

**APPLICATIONS AND USAGE:** IHC (1-2 µg/ml)

This information is only intended as a guide. The optimal dilutions must be determined by the user



Immunohistochemical analysis of paraffin embedded formalin fixed human breast carcinoma (A and B) and human prostate carcinoma (C) using recMAb™ Anti-MYH11 antibody.



SDS-PAGE analysis to confirm the purity and integrity of recMAb™ Anti-MYH11 antibody.

**RELATED PRODUCTS:**

Runx2 Antibody (6773)

CBFb polyclonal antibody (6835)

Anti-ACTA2 Rabbit Monoclonal Antibody (A1118)

Anti-MYOD1 recMAb™ Antibody (A2198)

***FOR RESEARCH USE ONLY! Not to be used on humans.***