

Anti-ATM Antibody

CATALOG NO.: A2211-100 (100 µl)

BACKGROUND DESCRIPTION: The protein encoded by this gene belongs to the PI3/PI4-kinase family. This protein is an important cell cycle checkpoint kinase that phosphorylates; thus, it functions as a regulator of a wide variety of downstream proteins, including tumor suppressor proteins p53 and BRCA1, checkpoint kinase CHK2, checkpoint proteins RAD17 and RAD9, and DNA repair protein NBS1. This protein and the closely related kinase ATR are thought to be master controllers of cell cycle checkpoint signaling pathways that are required for cell response to DNA damage and genome stability. Mutations in this gene are associated with ataxia telangiectasia, an autosomal recessive disorder.

ALTERNATE NAMES: AT1, ATA, ATC, ATD, ATE, ATDC, TEL1, TELO1

ANTIBODY TYPE: Polyclonal

HOST/ISOTYPE: Rabbit / IgG

IMMUNOGEN: KLH-conjugated synthetic peptide targeting a sequence within the center region of human ATM

MOLECULAR WEIGHT: 350 kDa

PURIFICATION: Affinity purified

FORM: Liquid

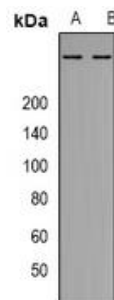
FORMULATION: In 0.42% Potassium phosphate; 0.87% NaCl; pH 7.3; 30% glycerol; and 0.01% sodium azide

SPECIES REACTIVITY: Human, Mouse

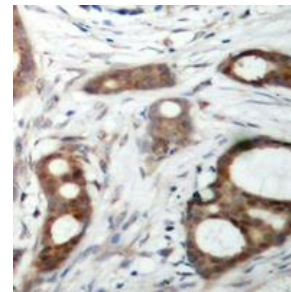
STORAGE CONDITIONS: Store at -20°C. Avoid freeze/thaw cycles

APPLICATIONS AND USAGE: WB (1:500 - 1:1000), IHC (1:100 - 1:200)

Note: This information is only intended as a guide. The optimal dilutions must be determined by the user



Western blot analysis of K562 (A), and mouse brain (B) whole cell lysates using Anti-ATM antibody.



Immunohistochemical analysis of paraffin embedded formalin fixed human prostate cancer using Anti-ATM antibody. The tissue section was pre-treated using heat mediated antigen retrieval with sodium citrate buffer (pH 6.0), then incubated with the antibody at RT and detected using an HRP conjugated compact polymer system. Chromogen used was DAB. The section was counterstained with hematoxylin prior to mounting with DPX.

RELATED PRODUCTS:

Anti-Histone H2AX Rabbit Monoclonal Antibody (A1143)

Anti-ATR / RAD54 Antibody (39f) (A1432)

ATR Antibody (3767)

Anti-p53 Antibody (IHC053) (A1547)