

# recMAb™ Anti-B7-H4 Antibody

09/20

CATALOG NO.: A2215-100 (100 µg)

**BACKGROUND DESCRIPTION:** This gene encodes a protein belonging to the B7 costimulatory protein family. Proteins in this family are present on the surface of antigen-presenting cells and interact with ligand bound to receptors on the surface of T cells. Studies have shown that high levels of the encoded protein have been correlated with tumor progression. A pseudogene of this gene is located on chromosome 20. Multiple transcript variants encoding different isoforms have been found for this gene.

**ALTERNATE NAMES:** B7X, B7H4, B7S1, B7h.5, VCTN1, PRO1291, B7 homolog 4, B7 Superfamily Member 1, FLJ22418, B7x, Protein B7S1

**ANTIBODY TYPE:** Monoclonal

**CLONE:** B7H4/2652R

**CONCENTRATION:** 1 mg/ml

**HOST/ISOTYPE:** Rabbit / IgG

**IMMUNOGEN:** Recombinant fragment of human B7-H4 protein

**MOLECULAR WEIGHT:** 35 kDa

**PURIFICATION:** Protein A/G purified

**FORM:** Liquid

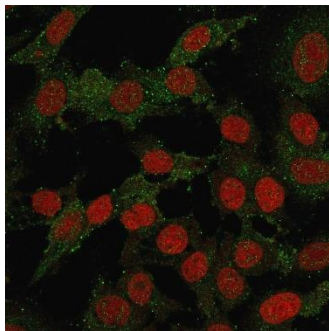
**FORMULATION:** In 10 mM PBS

**SPECIES REACTIVITY:** Human

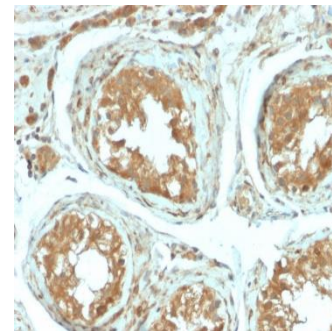
**STORAGE CONDITIONS:** Store at -20°C. Avoid freeze/thaw cycles

**APPLICATIONS AND USAGE:** FC (1-2 µg/million cells), IF (1-2 µg/ml), IHC (1-2 µg/ml)

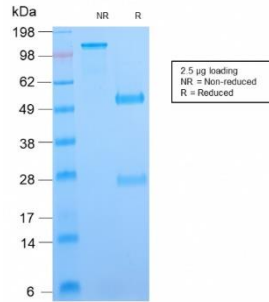
This information is only intended as a guide. The optimal dilutions must be determined by the user



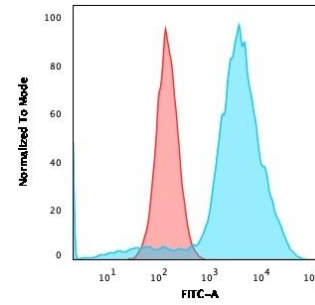
Immunofluorescence analysis of SKBR-3 cells using recMAb™ Anti-B7-H4 antibody. Secondary antibody used was CF488 conjugated Goat Anti-Mouse IgG antibody (Green). Nuclear counterstain used was Reddot (Red).



Immunohistochemical analysis of paraffin embedded formalin fixed human testicular carcinoma using recMAb™ Anti-B7-H4 antibody.



SDS-PAGE analysis to confirm the purity and integrity of recMAb™ Anti-B7-H4 antibody.



Flow cytometry analysis of SKBR-3 cells using recMAb™ Anti-B7-H4 antibody. Secondary antibody used was CF488 conjugated Goat Anti-Mouse IgG antibody (Blue). Isotype control (Red).

#### RELATED PRODUCTS:

Anti-CD244 Antibody (2B4.69) (A1073)  
 Anti-Caspase-3 Antibody (Clone#AMC0213) (A2015)  
 Anti-CD276 (B7-H3), Rabbit Monoclonal Antibody (A1830)  
 Anti-PD-L1 Antibody (IHC411) (A1549)

**FOR RESEARCH USE ONLY! Not to be used on humans.**