

# recMAb™ Anti-PMS2 Antibody

09/20

---

**CATALOG NO.:** A2223-100 (100 µg)
 

---

**BACKGROUND DESCRIPTION:** The protein encoded by this gene is a key component of the mismatch repair system that functions to correct DNA mismatches and small insertions and deletions that can occur during DNA replication and homologous recombination. This protein forms heterodimers with the gene product of the mutL homolog 1 (MLH1) gene to form the MutL-alpha heterodimer. The MutL-alpha heterodimer possesses an endonucleolytic activity that is activated following recognition of mismatches and insertion/deletion loops by the MutS-alpha and MutS-beta heterodimers, and is necessary for removal of the mismatched DNA. There is a DQHA(X)2E(X)4E motif found at the C-terminus of the protein encoded by this gene that forms part of the active site of the nuclease. Mutations in this gene have been associated with hereditary nonpolyposis colorectal cancer (HNPCC; also known as Lynch syndrome) and Turcot syndrome.

**ALTERNATE NAMES:** MLH4, PMSL2, HNPCC4, PMS2CL, H\_DJ0042M02.9

**ANTIBODY TYPE:** Monoclonal

**CLONE:** PMS2/4373R

**CONCENTRATION:** 1 mg/ml

**HOST/ISOTYPE:** Rabbit / IgG

**IMMUNOGEN:** Synthetic peptide targeting residues within aa 1-100 of PMS2

**MOLECULAR WEIGHT:** 96 kDa

**PURIFICATION:** Protein A/G purified

**FORM:** Liquid

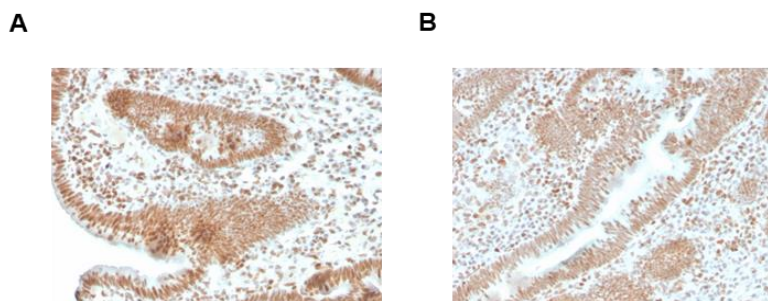
**FORMULATION:** In 10 mM PBS

**SPECIES REACTIVITY:** Human

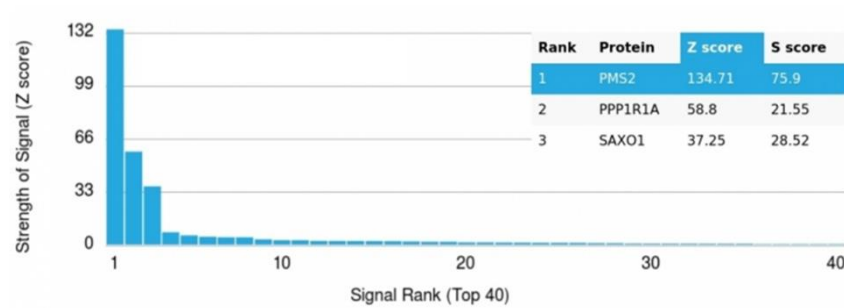
**STORAGE CONDITIONS:** Store at -20°C. Avoid freeze/thaw cycles

**APPLICATIONS AND USAGE:** IHC (1-2 µg/ml)

This information is only intended as a guide. The optimal dilutions must be determined by the user



Immunohistochemical analysis of paraffin embedded formalin fixed human colon carcinoma (A and B) using recMAb™ Anti-PMS2 antibody.



Protein Array analysis of > 19,000 full-length human proteins on HuProt™ array using the recMAb™ Anti-PMS2 antibody. Protein array data is represented in the form of the Z-score and S-score. Z-score denotes signal strength of a monoclonal antibody (in conjugation with fluorescently-tagged anti-IgG secondary antibody) which it produces when binding to a particular protein on an array. S-score denotes the specificity of a monoclonal antibody relative to the target protein. S-score is calculated as the difference between the Z-scores. If the S-score is > 2.5, then the monoclonal antibody is specific to its target protein of interest.

#### RELATED PRODUCTS:

Anti-MLH1 Antibody (A1561)  
 Anti-EpCAM Monoclonal Antibody (Clone: ABM2C92) (A1538)  
 MSH6 Antibody (3879)  
 Anti-p53 Antibody (56F12-2) (A1581)

**FOR RESEARCH USE ONLY! Not to be used on humans.**