

# Anti-Diglycyl-Lysine Antibody (Clone# GX41)

10/20

CATALOG NO.: A2226-100 (100 µg)

**BACKGROUND DESCRIPTION:** Ubiquitination is one of the most important post-translational modifications that determine the functional activity and stability of the protein. Additionally, it plays a significant role in multiple biological processes such as cell proliferation, differentiation, regulation of cell cycle, gene transcription, and apoptosis. Changes in the ubiquitination of proteins correlate with the pathogenesis of diseases such as cancer, inflammation, and cardiovascular diseases and are therefore considered a novel target for drug development. Protein ubiquitination can be identified by mutational experiments and tandem mass spectrometry (MS/MS). However, a new approach relies on an antibody-based detection wherein the antibody recognizes diglycyl-lysine peptide generated as a result of the digestion of protein sample by trypsin. BioVision's Diglycyl-Lysine Antibody (Clone# GX41) can help identify the diglycyl lysine sequences that are present on the  $\epsilon$ -amine of lysine as an adduct with no reactivity to unmodified lysine.

**ALTERNATE NAMES:** Diglycyl-Lysine, Gly-Gly Lysine

**ANTIBODY TYPE:** Monoclonal

**CLONE:** GX41

**HOST/ISOTYPE:** Mouse / IgG

**IMMUNOGEN:** Linear peptide corresponding to Diglycyl Lysine

**PURIFICATION:** Protein A affinity chromatography

**FORM:** Lyophilized

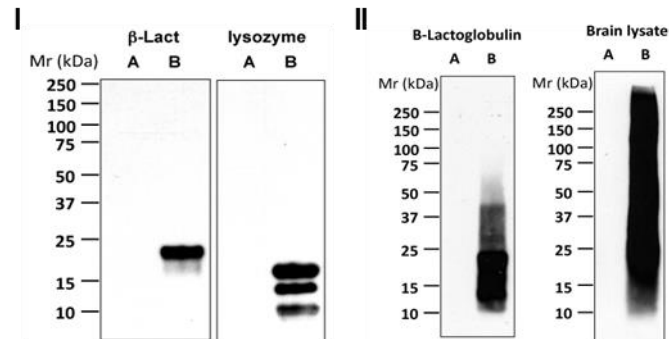
**FORMULATION:** In 0.2 M HEPES pH 8.5

**SPECIES REACTIVITY:** Human, Mouse, Rat, Chicken, Bovine, Equine, Yeast

**STORAGE CONDITIONS:** Store at -20°C. Avoid freeze/thaw cycles

**APPLICATIONS AND USAGE:** Western Blot, IP

This information is only intended as a guide. The optimal dilutions must be determined by the user



Western Blot analysis of Lysozyme (I), Rat brain lysate (II) and  $\beta$ -Lactoglobulin (I and II) samples containing either unmodified (A) and Diglycyl modified lysines (B) using Anti-Diglycyl-Lysine Antibody (Clone# GX41)

## RELATED PRODUCTS:

UCHL1 Antibody (6130)  
 Anti-UBE2G1 Antibody (A1190)  
 UHRF1 Antibody (6144)  
 Anti-USP7 Antibody (A2214)  
 Anti-Ubiquitin Antibody (A1702)