

CA19-9 Antibody (Clone# 121SLE), Carrier-Free

10/20

CATALOG NO.: A2227-100 (100 µg)

BACKGROUND DESCRIPTION: CA19-9, a carbohydrate epitope expressed on a high MW (400 kDa) mucin glycoprotein, is a sialyl Lewisia structure that is synthesized from type 1 blood group precursor chains and is present in individuals expressing the Lewisia and/or Lewisb blood group antigens. In normal tissues, sialyl Lewisia antigen is present in the ductal epithelium of the breast, kidney, salivary gland, and sweat glands. Its expression is greatly enhanced in serum as well as in the majority of tumor cells in gastrointestinal (GI) carcinomas, including adenocarcinomas of the stomach, intestine, and pancreas. Preoperative elevated CA19-9 levels in patients with stage I pancreatic carcinoma decrease to normal values following surgery. When used serially, CA19-9 can predict the recurrence of disease before radiographic or clinical findings. This BSA and Azide-free monoclonal antibody are excellent for staining of formalin-fixed, paraffin-embedded tissues.

ALTERNATE NAMES: Pancreatic tumor antigen, Ovarian tumor antigen, Sialyl Lewisia, CA19.9

ANTIBODY TYPE: Monoclonal

CLONE: 121SLE

CONCENTRATION: 1 mg/ml

HOST/ISOTYPE: Mouse / IgM, kappa

IMMUNOGEN: Precipitin lines obtained after immuno-diffusion using MAb 116-NS-19-9 and mucins isolated from an ovarian cyst of a Lewis A+B- patient

MOLECULAR WEIGHT: > 400 kDa

PURIFICATION: Protein A/G purification

FORM: Liquid

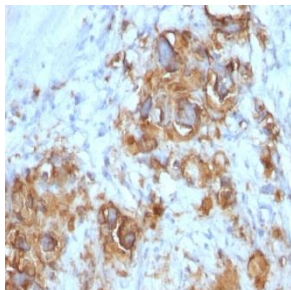
FORMULATION: In 10 mM PBS

SPECIES REACTIVITY: Human

STORAGE CONDITIONS: Store at -20°C. Avoid freeze/thaw cycles

APPLICATIONS AND USAGE: IHC 1-2 µg/ml

This information is only intended as a guide. The optimal dilutions must be determined by the user



Immunohistochemical analysis of paraffin embedded formalin fixed human gastric carcinoma using CA19-9 Antibody (Clone# 121SLE), Carrier-Free. The tissue section was heated in 10 mM Tris with 1 mM EDTA, pH 9.0 for 45 mins at 95°C, and then cooled at RT for 20 mins. The section was incubated with the antibody at RT for 30 mins.

RELATED PRODUCTS:

Anti-Bax Antibody (BAX/962) (A1434)
 Anti-AFP Antibody (C3) (A1423)
 Anti-Bcl-2 Antibody (100/D5 + 124) (A1435)
 Anti-ALDH1A1 Antibody (ALDH1A1/1381) (A1424)

FOR RESEARCH USE ONLY! Not to be used on humans

Gentaur Europe BVBA Voortstraat 49, 1910 Kampenhout BELGIUM
 Tel 0032 16 58 90 45 info@gentaur.com

