

# Anti-FGF23 Antibody (Clone# FGF23/4162)

10/20

CATALOG NO.: A2230-100 (100 µg)

**BACKGROUND DESCRIPTION:** This gene encodes a member of the fibroblast growth factor family of proteins, which possess broad mitogenic and cell survival activities and are involved in a variety of biological processes. The product of this gene regulates phosphate homeostasis and transport in the kidney. The full-length, functional protein may be deactivated via cleavage into N-terminal and C-terminal chains. Mutation of this cleavage site causes autosomal dominant hypophosphatemic rickets (ADHR). Mutations in this gene are also associated with hyperphosphatemic familial tumoral calcinosis (HFTC).

**ALTERNATE NAMES:** ADHR, FGFN, HYPF, HFTC2, HPDR2, PHPTC, FGF-23, FGF23

**ANTIBODY TYPE:** Monoclonal

**CLONE:** FGF23/4162

**HOST/ISOTYPE:** Mouse / IgG2b, kappa

**IMMUNOGEN:** Recombinant fragment (around aa 25-251) of human FGF23 protein

**PURIFICATION:** Protein A/G purified

**FORM:** Liquid

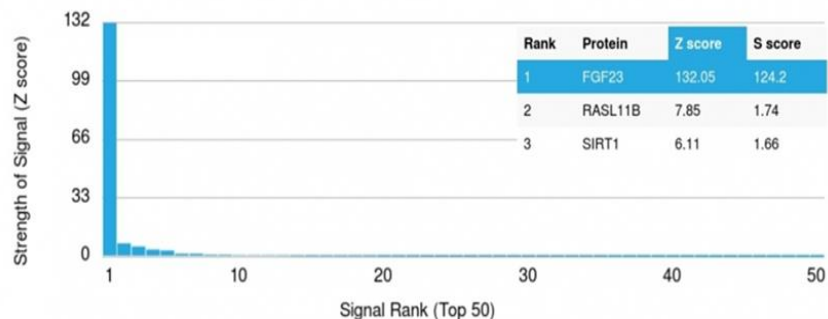
**FORMULATION:** In 10 mM PBS

**SPECIES REACTIVITY:** Human

**STORAGE CONDITIONS:** Store at -20°C. Avoid freeze/thaw cycles

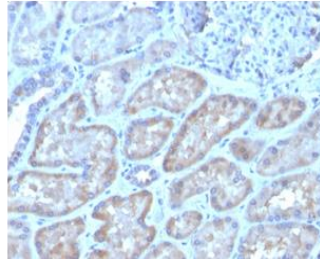
**APPLICATIONS AND USAGE:** IHC 1-2 µg/ml

This information is only intended as a guide. The optimal dilutions must be determined by the user

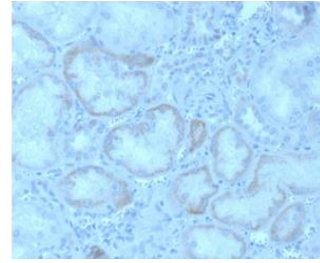


Protein Array analysis of > 19,000 full-length human proteins on HuProt™ array using the Anti-FGF23 antibody (Clone# FGF23/4162). Protein array data is represented in the form of the Z-score and S-score. Z-score denotes signal strength of a monoclonal antibody (in conjugation with fluorescently-tagged anti-IgG secondary antibody) which it produces when binding to a particular protein on an array. S-score denotes the specificity of a monoclonal antibody relative to the target protein. S-score is calculated as the difference between the Z-scores. If the S-score is > 2.5, then the monoclonal antibody is specific to its target protein of interest.

**A**



**B**



Immunohistochemical analysis of paraffin embedded formalin fixed human kidney (A and B) using Anti-FGF23 antibody (Clone# FGF23/4162).

**RELATED PRODUCTS:**

FGF-1 Antibody (5034)

Anti-FGFR3 Antibody (A1630)

EGF Antibody (5022)

Anti-TGF- $\beta$ 1 Antibody (A1456)

***FOR RESEARCH USE ONLY! Not to be used on humans.***