

Anti-LCN2 Antibody (Clone# 3B1C10)

10/20

CATALOG NO.: A2235-100 (100 µg)

BACKGROUND DESCRIPTION: This gene encodes a protein that belongs to the lipocalin family. Members of this family transport small hydrophobic molecules such as lipids, steroid hormones, and retinoids. The protein encoded by this gene is a neutrophil gelatinase-associated lipocalin and plays a role in innate immunity by limiting bacterial growth as a result of sequestering iron-containing siderophores. The presence of this protein in blood and urine is an early biomarker of acute kidney injury. This protein is thought to be involved in multiple cellular processes, including maintenance of skin homeostasis, and suppression of invasiveness and metastasis. Mice lacking this gene are more susceptible to bacterial infection than wild-type mice.

ALTERNATE NAMES: p25, 24p3, MSFI, NGAL, LCN2, HNL, Lipocalin 2, Siderocalin

ANTIBODY TYPE: Monoclonal

CLONE: 3B1C10

HOST/ISOTYPE: Mouse / IgG2b

IMMUNOGEN: Recombinant Human Neutrophil gelatinase-associated lipocalin protein

MOLECULAR WEIGHT: 25 kDa

PURIFICATION: Protein G purified

FORM: Liquid

FORMULATION: In 0.01 M PBS, pH 7.4, 50% Glycerol, 0.03% proclin 300

SPECIES REACTIVITY: Human

STORAGE CONDITIONS: Store at -20°C. Avoid freeze/thaw cycles

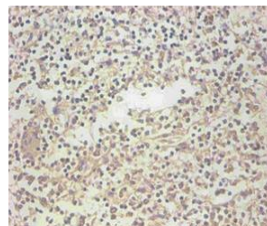
APPLICATIONS AND USAGE: WB (1:500-1:5000), IHC (1:50-1:500)

This information is only intended as a guide. The optimal dilutions must be determined by the user

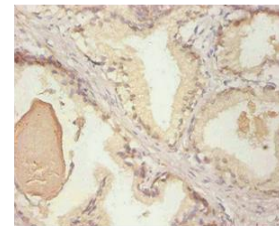


Western blot analysis of NGAL transfected 293 cell lysates using Anti-LCN2 antibody (Clone# 3B1C10). Primary antibody dilution used was 1 µg/ml.

A



B



Immunohistochemical analysis of paraffin embedded human spleen (A) and human prostate (B) using Anti-LCN2 antibody (Clone# 3B1C10). Primary antibody dilution used was 1:200.

RELATED PRODUCTS:

CCL2 Antibody (CT) (6730)

MMP-9 Antibody (3969)

recMAb™ Anti-GFAP Antibody (A2201)

Anti-STAT3 Antibody (A1670)

FOR RESEARCH USE ONLY. Not to be used on humans.

Gentaur Europe BVBA Voortstraat 49, 1910 Kampenhout BELGIUM
 Tel 0032 16 58 90 45 info@gentaur.com

